

COMPANY PROFILE

KUMUDU S MUNASINGHE ARCHITECTS
IN ASSOCIATION WITH **PANARCH** Pvt. Ltd

Kumudu S. Munasinghe



Kumudu S Munasinghe, a Sri Lankan Architect. Kumudu specializes in architectural design and detailing for the Sri Lankan environment. He is well known for his housing projects. But Kumudu has also worked on several high rise, high profile projects in Colombo

Sir Ian G Jennings



British Architect RIBA and professionally qualified Project Manager, who has spent nearly all of his 30 years working career involved with Architecture and Project Management, becoming an expert on contracts, procedures and claims. Sir Ian has worked on significant projects for international Clients both in Sri Lanka and overseas. Ian is assisted by his long time colleague:



AIMS,,,,,,,,,,,,,,,,,,,,,

To provide excellence in the provision of professional services, be it Architecture, Project Management or other services, by offering a quality service from inception to completion.

To offer a personal commitment to the Client by the Principals.

To carry the flair for the Architectural design into the Project Management.

Endeavoring to ensure that the project is completed as intended, to the specified standards, within budget and on time.

OUR TEAM



KEY PERSONALS

Sir Ian G Jennings



- Diploma in Architecture Portsmouth Polytechnic, U.K 1971
- 1972 ARB (UK) and Architect RIBA
- M.Sc. (Architecture) University College, London 1973.
- 2002 Project Manager Member Association for Project Management

Kumudu S. Munasinghe



- B.Sc. (Built Environment) University of Moratuwa.
- M.Sc. (Architecture) University of Moratuwa.
- Chartered Architect at Sri Lanka Institute of Architects 1998.
- Fellow member of Sri Lanka institute of architect 2020.

Amitha Yapa



- B.Sc. (Built Environment) University of Moratuwa.
- M.Sc. (Architecture) University of Moratuwa.
- Chartered Architect at Sri Lanka Institute of Architects 2011.

S A P Gunarathna



- B.Sc. Civil Engineering University of Peradeniya 1979-1983.
- Member Institute of Civil Engineers, Sri Lanka (M-2287) 1988.
- M.Sc. in Structural Engineering University of Liverpool, UK. 1990-1991.
- Graduate Member, Institute of Structural Engineers, UK. 1991.

R P K Saputhanthri



- B.Sc. Specialized in Mechanical Engineering at University of Moratuwa.
- Completed Fundamentals of Heating, Ventilating and Air Conditioning Systems conducted by the Department of Mechanical Engineering University of Moratuwa in collaboration with the ASHRAE Sri Lankan chapter 171.
- LEED Certified engineer**

Sir Ian G Jennings



- Diploma in Architecture Portsmouth Polytechnic, U.K 1971
- 1972 ARB (UK) and Architect RIBA
- M.Sc. (Architecture) University College, London 1973.
- 2002 Project Manager Member Association for Project Management

Mr. Charles Denison Bate (Denis)



- BA. (Health and Safety) Wexford University 1992.
- MA(Hons)(H&S) Wexford University 1994.
- Diploma in Safety Management (DipSM) British Safety Council.
- Member of the International Institute of Risk and Safety Management (MIIRSM) 1994.
- Member of the Institute of Safety and Public Protection (MISPP) 1994.

Bryan Fung



- BSc (Hons) Environmental Services Engineering University of Bath, United Kingdom
- MEng (Fire Safety) University of Western Sydney, Australia.
- CEng (UK) Chartered Engineer, the Engineering Council, UK.
- CPEng (AU) Chartered Professional Engineer, Australia - NPER Registered.
- MCIBSE(UK) – Corporate Member, Chartered Institution of Building Services Engineers.
- MIEAust Member, Institution of Engineers, Australia
- FSE (Sing) Registered Fire Safety Engineer, Singapore
- Accredited Assessor National Australian Built Environment Rating System (NABERS) Scheme
- Accredited Professional Green Building Council Australia
- LEED Accredited Professional US Green Building Council
- Green Mark Manager Singapore

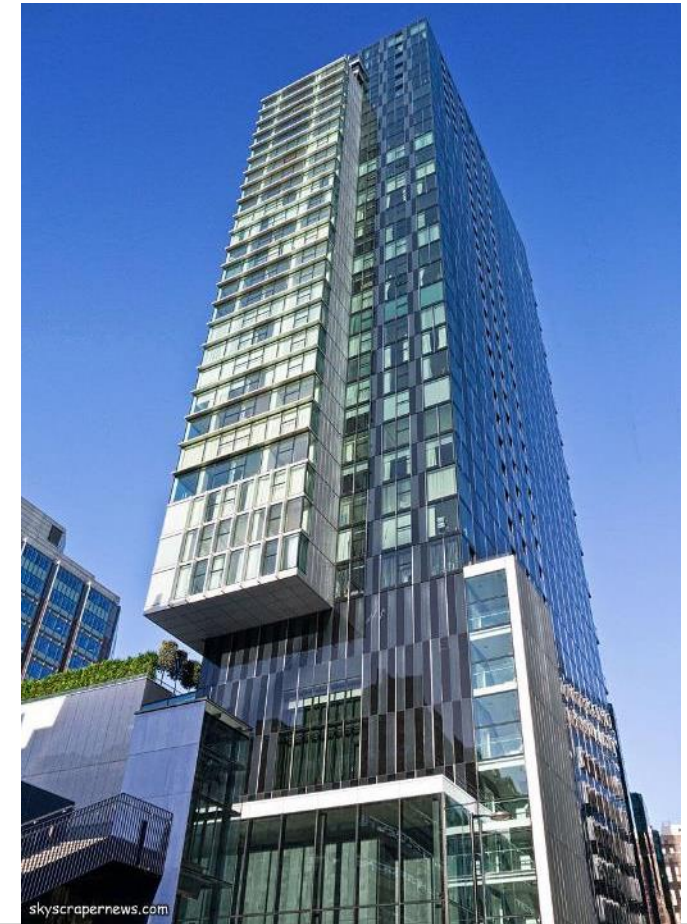
PANARCH OVERSEAS

17 -04, The Heron

5 Moor Lane, London EC2Y 9AP

Tel 00 44 7749 076933

E mail - panarch@pan.lk





HOTEL AND LEISURE PROJECTS

KUMUDU S MUNASINGHE ARCHITECTS
IN ASSOCIATION WITH **PANARCH** Pvt. Ltd

THE CINNAMON GRAND HOTEL 2007

Cinnamon
GRAND
COLOMBO



Refurbishment comprising: 244 Guest Bedrooms, Ballroom and Pre-functions Areas, Multi-Function Atrium, Hospitality, Executive, and Crew Lounges and 4 Meeting Rooms. The redesign of atrium to have any function where the sound is used without disturbing to the existing bedrooms and a new sound proofing facility has been introduced to the existing bedrooms.

LOCATION: 77 Galle Road, Colombo 03 Sri Lanka

CLIENT: Asian Hotels & Properties Ltd

CONTRACTOR: Maga Engineering (Pvt) Ltd & Serijadi Furnishing Sdn Bhd

PROJECT COST: RS. 1,900 million



KUMUDU S MUNASINGHE ARCHITECTS
IN ASSOCIATION WITH **PANARCH Pvt. Ltd**

THE REEF HOTEL , HIKKADUWA
2002



The complete renovation of the existing Reef Comber Hotel. The project include construction of New Entrance, New Kitchen and Restaurant also including the Enhancement of the Rooms.

LOCATION: Hikkaduwa, Sri Lanka
CLIENT : Connaissance De Ceylon Ltd
CONTRACTOR: Southern Lanka Construction
PROJECT COST: RS. 200 million

KUMUDU S MUNASINGHE ARCHITECTS
IN ASSOCIATION WITH **PANARCH Pvt. Ltd**

THE REEF HOTEL , HIKKADUWA
2002



KUMUDU S MUNASINGHE ARCHITECTS
IN ASSOCIATION WITH **PANARCH** Pvt. Ltd

AMAYA LAKE

2014

A tropical haven complete with sweeping views of Kandalama Lake, Amaya Lake surrounds you with natural beauty. Choose your oasis from one of our 95 guest rooms and suites, designed in harmony with the un-spoilt environs of the resort. Enjoy waking up each morning to the humming of birds and let the airy breeze and quiet whispers of rustling trees enliven your senses. Each room resonates a home-away-from-home impression, with soft, earthy tones to let your mind escape from the cares of the world.

LOCATION:
Sigiriya, Dambulla

CLIENT:
Amaya Lake – Signature Wing

PROJECT COST:
RS. 650 Million



KUMUDU S MUNASINGHE ARCHITECTS
IN ASSOCIATION WITH **PANARCH Pvt. Ltd**



Signature By
AMAYA LAKE
2014



KUMUDU S MUNASINGHE ARCHITECTS
IN ASSOCIATION WITH **PANARCH** Pvt. Ltd

PLATINUM 01 BY KINGSBURY 2017

The design and built architecture and interior project for the platinum apartment 01 which includes retail malls, Sri Lanka's first mechanical car system with interface, public area including Lobby, Lounge, Restaurant and Spa. The project was done to meet 5 star services by Kingsbury Hotel. The project completes total interior of all apartments and the lounge.

LOCATION:

Platinum Reality Investment (Pvt) Ltd |
Bagatole Road, Colombo 04.

CLIENT:

Platinum Reality Investment Pvt Ltd

PROJECT COST:

Rs. 200 million

KUMUDU S MUNASINGHE ARCHITECTS
IN ASSOCIATION WITH **PANARCH Pvt. Ltd**







2010 DESIGN EXCELLENCE



ROMANCE VALLEY 2015

It is a simple geometric shape (cube), which highlights the site's mountainous terrain. The house captures the view of the valley towards the South, and the mountain range towards the North and North West. The different levels at terraces makes the interesting habitable spaces compliment with different views. The infinity pool, merged with the sky screen, give the some what unusual experience to the occupations.

Project - Boutique Hotel.
10 Bedroom Boutique hotel with two swimming pools and other ancillary facilities including lounges, dining hall and terraces.

Awards - 2010 Design Excellence Award by Sri Lanka Institute of Architect.

LEEDS Gold 2012.

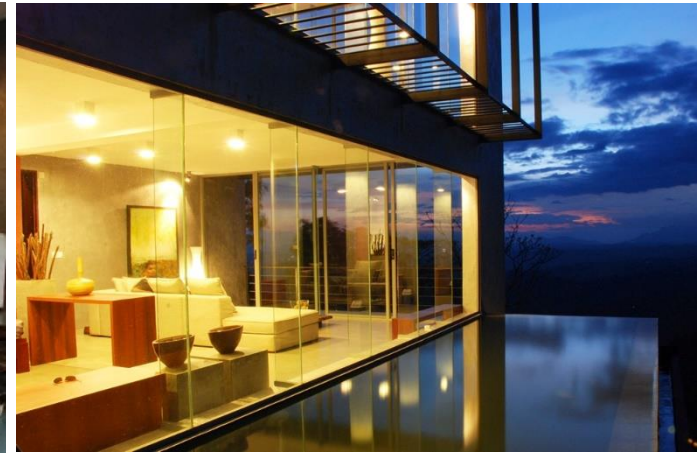
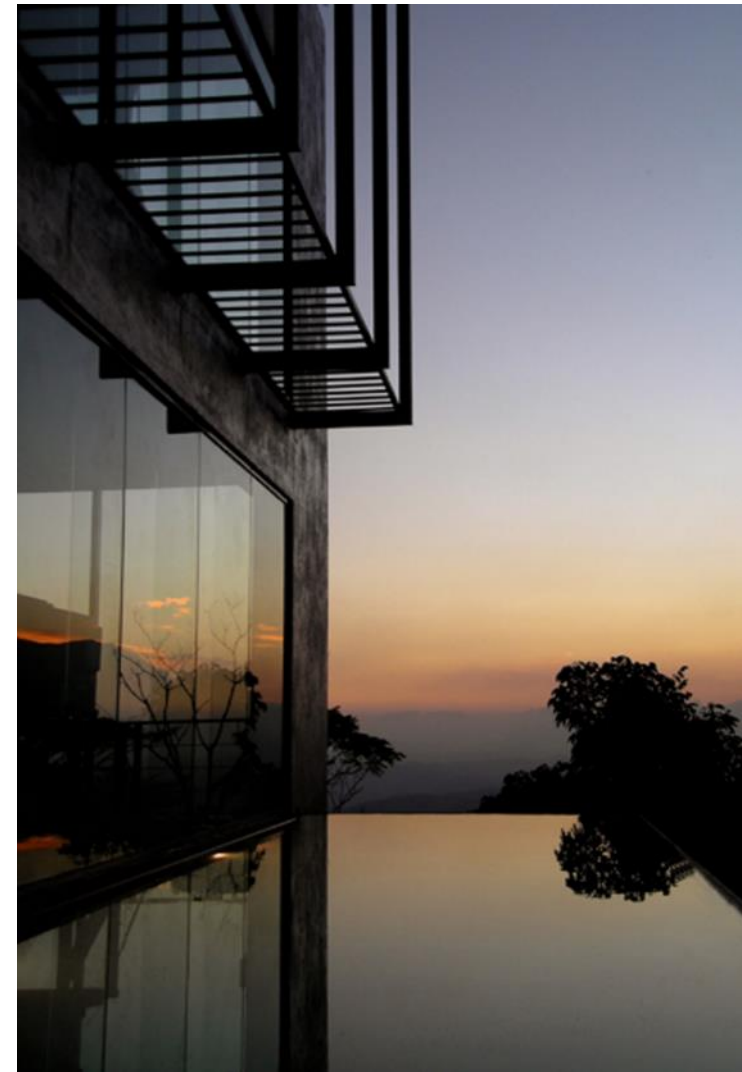
LOCATION:
Berahala, Haputhale

CLIENT:
Romance valley(Pvt) Ltd

PROJECT COST:
Rs. 250 million

KUMUDU S MUNASINGHE ARCHITECTS
IN ASSOCIATION WITH **PANARCH Pvt. Ltd**

ROMANCE VALLEY
2015



KUMUDU S MUNASINGHE ARCHITECTS
IN ASSOCIATION WITH **PANARCH** Pvt. Ltd

LOVERSLEAP, NUWARA ELIYA 2014



This 100 years old small cottage built in the pre independence area. The cottage has 3 Bed rooms with ensuite bathrooms and common living and ining area. It has unique appearance with its Tudor style Architectural trellis works.



This unique small Scottish cottage sits on the valley of lovers leap water falls in Nuwara Eliya. The cottage is surrounded by mountain range and valleys with vegetable yards make typical village seen in locality. It has panoramic view towards Haggala and lovers leap falls.

CLIENT :
Romance Valley (Pvt) Ltd

COST :
Rs. 50 million

LOCATION :
No. 26, Loversleap, Nuwara Eliya.

**OLIPHANT BUNGALOW Refurbishment
At Nuwara Eliya
2017**



160 years old estate bungalow was in dilapidated condition. The project was to restore the old structure and accommodate small boutique hotel. The **Tudor architectural style** adapted to this project. The treatment to the whole structure has been done with utmost care since the old structure stands on technology of 18 century. The renovation carried out with skill craftsman.

CLIENT: Kaleni Valley Plantation with Amaya Resort & Spa.

LOCATION : Shanthipura Nuwara Eliya

PROJECT COST: RS. 250 million

KUMUDU S MUNASINGHE ARCHITECTS
IN ASSOCIATION WITH **PANARCH Pvt. Ltd**



OLIPHANT BUNGALOW Refurbishment
At Nuwara Eliya
2017



KUMUDU S MUNASINGHE ARCHITECTS
IN ASSOCIATION WITH **PANARCH** Pvt. Ltd

OLIPHANT BUNGALOW Refurbishment
At Nuwara Eliya
2017



KUMUDU S MUNASINGHE ARCHITECTS
IN ASSOCIATION WITH **PANARCH** Pvt. Ltd

**OLIPHANT BUNGALOW Refurbishment
At Nuwara Eliya
2017**



photography by
Madhushan De Silva | All rights reserved. (+94) 0773 816 583
hello@madfactorylk.com | www.madfactorylk.com

MAD FACTORY



photography by
Madhushan De Silva | All rights reserved. (+94) 0773 816 583
hello@madfactorylk.com | www.madfactorylk.com

MAD FACTORY



photography by
Madhushan De Silva | All rights reserved. (+94) 0773 816 583
hello@madfactorylk.com | www.madfactorylk.com

MAD FACTORY

KUMUDU S MUNASINGHE ARCHITECTS
IN ASSOCIATION WITH **PANARCH Pvt. Ltd**

**OLIPHANT BUNGALOW Refurbishment
At Nuwara Eliya
2017**



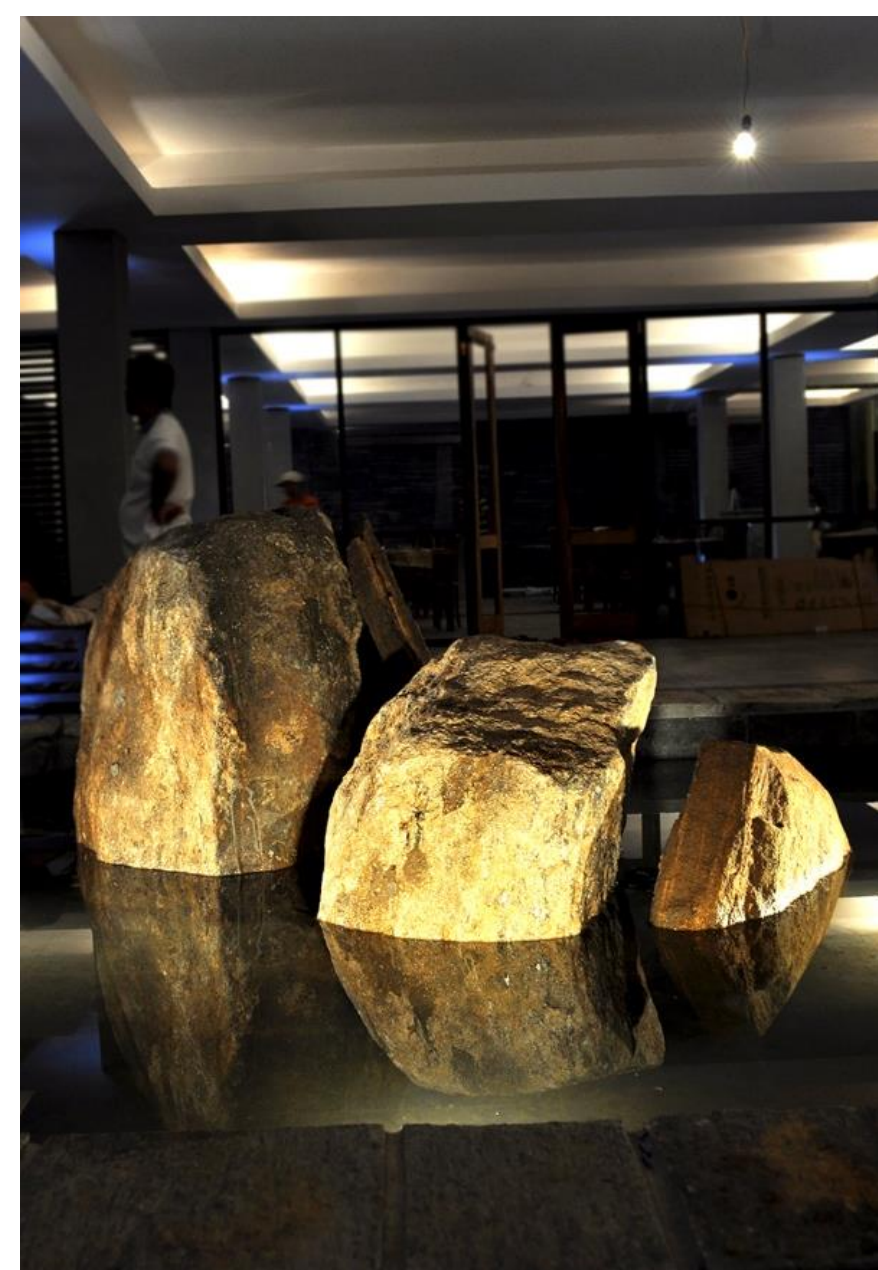
KUMUDU S MUNASINGHE ARCHITECTS
IN ASSOCIATION WITH **PANARCH Pvt. Ltd**

SOROWWA
2010
RESORT AND SPA AT HABARANA

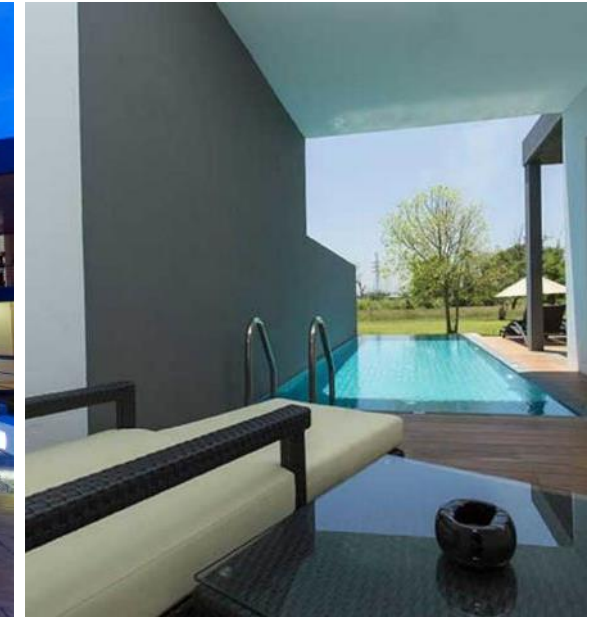
A tropical hotel in Habarana having 30 bedrooms, Lounge, Spa and Swimming pool. This was built with a RCC structure facing the Habarana lake and the design was done to relate the in and out spaces to relate the natural ambiance created by the lake.

LOCATION: Habarana
CLIENT: Dr. Navas Jiffrey
CONTRACTOR: Numerous Sub Contractures
PROJECT COST: RS. 200 million

KUMUDU S MUNASINGHE ARCHITECTS
IN ASSOCIATION WITH **PANARCH Pvt. Ltd**



ALIYA RESORT AND SPA
2014



The 100 bedroom new Boutique Hotel located next to an open paddy field framing the view of the Sigiriya Rock. The hotel comprises of 90 Bedrooms and 10 Villas, Lounges, Restaurant, SPA, Gymnasium and a large Swimming Pool which is focusing the Sigiriya Rock. The minimalistic design to go with the luxurious interior adds a superior atmosphere adhering the natural setting with in the area.

LOCATION: Digampathana, Dambulla

CLIENT : Connaissance De Ceylon Ltd

CONTRACTOR: Numerous Sub Contractures

PROJECT COST: RS. 1200 million

KUMUDU S MUNASINGHE ARCHITECTS
IN ASSOCIATION WITH **PANARCH Pvt. Ltd**

VILLA AT TANGALLE 2014



The Beach Villa at Tangalle is built on a hilly part of the beach. The villa is design to have panoramic view. The hotel project have 3 building centered with large courtyard which open the Tangalle beach. The main house has public areas such as living, dinning, lounges and verandah. The other two buildings on either side continue with bedrooms and suites.

LOCATION: Tangalle , Sri Lanka.

CLIENT: Andrew Palmer

AREA: 9000 SQFT

COST: Rs. 70 million

KUMUDU S MUNASINGHE ARCHITECTS
IN ASSOCIATION WITH **PANARCH Pvt. Ltd**



PROPOSED REFURBISHMENT HOLIDAY BUNGALOW, PADUKKA, SRI LANKA 2019



The elevated land is blessed with panoramic view toward inland beauty of Sri Lanka. The Dutch influence design and details have been adapted to the existing structure. The large verandah have been designed in three sides of the house to get the Dutch authentic outlook. The grand open stairway to the house will have the bell tower and Dutch scrolls on side walls as a main feature.

LOCATION: Padukka, Sri Lanka

CLIENT : MR. Danuka Samarasinghe

KUMUDU S MUNASINGHE ARCHITECTS
IN ASSOCIATION WITH **PANARCH Pvt. Ltd**

'WHITE LOTUS' HOUSE AT BOLGODA
2013



The Dutch and colonial influence in Sri Lankan architecture is still established in peoples' minds. The home is inspired from the detailing and composition of the Dutch colonial architecture expressing a contemporary feeling. Orientating the building to exposes the most out to the captive Bolgoda Lake and placing it to preserve the large garden area the building takes you through a journey towards the lake through articulations of space, volume and light. All the spaces are designed focusing on capturing the view of the lake. The series of internal and external spaces lead from entrance verandah to the water courts and the double height colonial the special progression towards the lake view. The gorgeous elegance in the outlook and the interior has made the dominance of this establishment. Courts and the double height colonial the special progression towards the lake view.

CLIENT: Lakshmi Property (Pvt) Ltd

LOCATION: Bolgoda , Sri Lanka.

PROJECT COST: RS. 150 million

KUMUDU S MUNASINGHE ARCHITECTS
IN ASSOCIATION WITH **PANARCH Pvt. Ltd**



'WHITE LOTUS' HOUSE AT BOLGODA
2013



KUMUDU S MUNASINGHE ARCHITECTS
IN ASSOCIATION WITH **PANARCH** Pvt. Ltd

SERENDIB LOUNGE
For Sri Lankan Air Lines
2013



The Theme : Blend of Sri Lankan culture combined with Modern design having futuristic touch to provide a comfortable relaxed atmosphere

Area 5,400 sq.ft. of General, Quiet, Dining for 60 to 70 guests including all Backup facilities

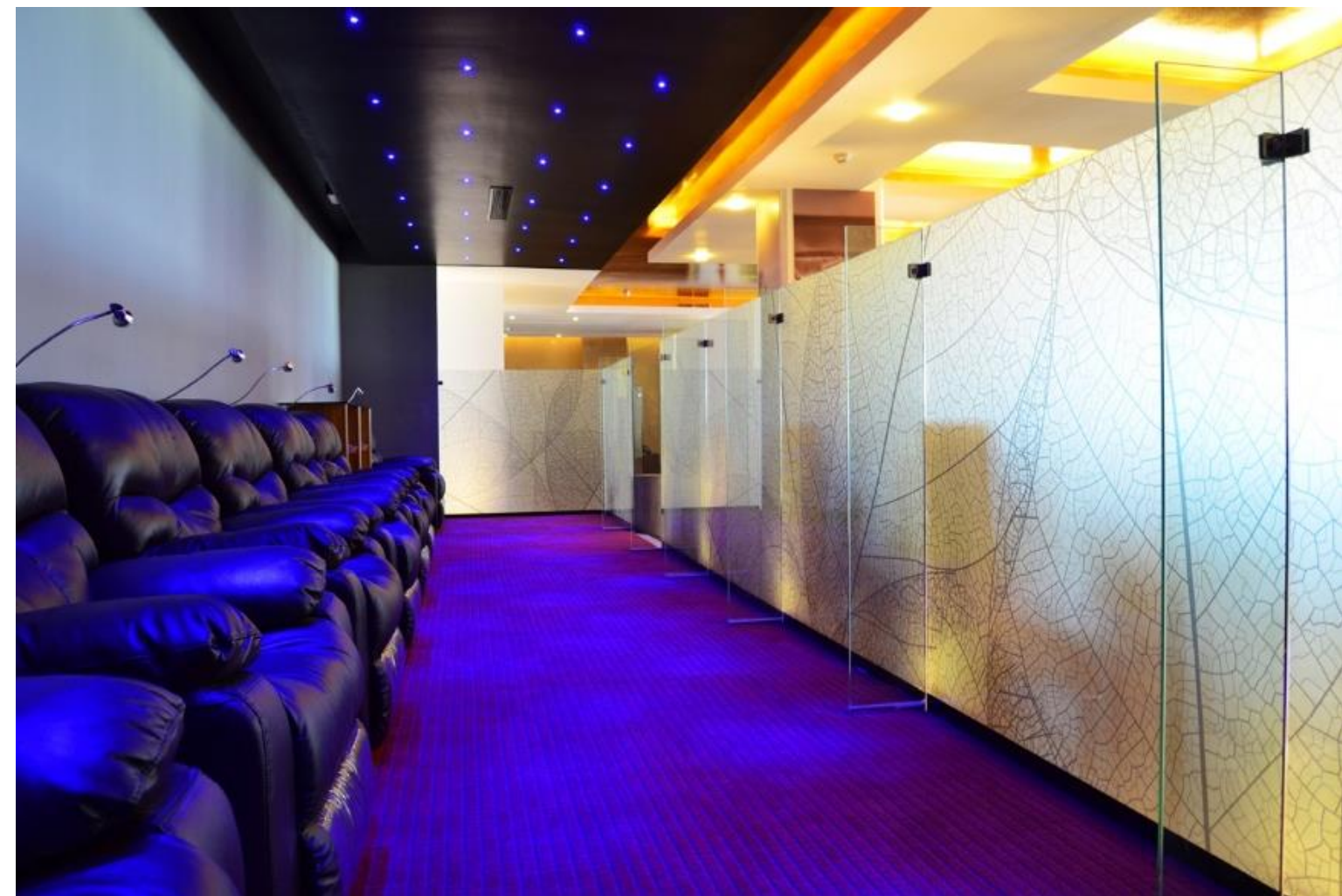
CLIENT:
Sri Lankan Airlines

LOCATION:
Bandaranayke International Airport

PROJECT COST:
RS. 150 million



SERENDIB LOUNGE
For Sri Lankan Air Lines
2013



KUMUDU S MUNASINGHE ARCHITECTS
IN ASSOCIATION WITH **PANARCH** Pvt. Ltd

**SRILANKAN AIRLINES
TICKETS OFFICE
2013**



The design concept emerge that the Sri Lankan identity within the international perspective. The culture and traditional phenomenon have been wrapped with modern out look to make tickets office within its own space.

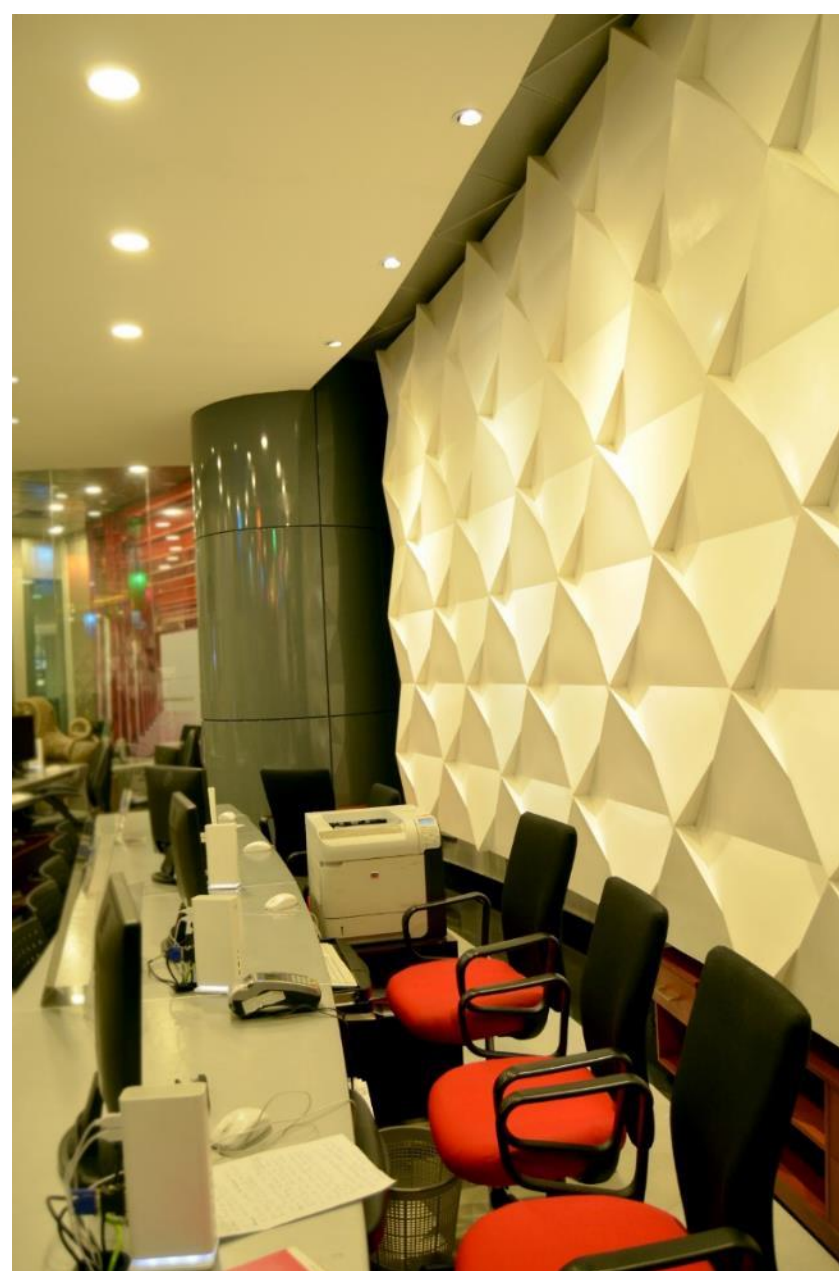
CLIENT: Sri Lankan Airlines

LOCATION: World Trade Centre

COST: Rs. 150 million

KUMUDU S MUNASINGHE ARCHITECTS
IN ASSOCIATION WITH **PANARCH Pvt. Ltd**

**SRILANKAN AIRLINES
TICKETS OFFICE
2013**



KUMUDU S MUNASINGHE ARCHITECTS
IN ASSOCIATION WITH **PANARCH** Pvt. Ltd

INTERNATIONAL PROJECTS



CLASS ONE HEATHROW AIRPORT LOUNGE

2006



The class one lounge has been designed to accommodate paying guests of all the airlines patronizing the Heathrow Airport. The design included renovation of three lounges and paying sleeping and accommodation area. Seating area, Dining area, Bar, Quiet Area, Smoking Area,

LOCATION: Heathrow Airport

CLIENT: No.1 Traveler Ltd.

PROJECT COST: 5 million GBP

KUMUDU S MUNASINGHE ARCHITECTS
IN ASSOCIATION WITH **PANARCH Pvt. Ltd**





Four Seasons Hotel Hampshire has restored a historic Georgian manor house outside London to seamlessly blend English country living with 21st-century modernity. The Hotel has 133 guest rooms, including 22 luxury suites, reflect the quiet country elegance of the Georgian era.

LOCATION:
Hampshire, United Kingdom

CLIENT:
Four Seasons (Pvt) Ltd

PROJECT COST:
40 million USD

KUMUDU S MUNASINGHE ARCHITECTS
IN ASSOCIATION WITH **PANARCH Pvt. Ltd**

INTERNATIONAL PROJECTS

FOUR SEASONS HOTEL
HAMPSHIRE
2003



KUMUDU S MUNASINGHE ARCHITECTS
IN ASSOCIATION WITH **PANARCH** Pvt. Ltd





OFFICE PROJECTS

KUMUDU S MUNASINGHE ARCHITECTS
IN ASSOCIATION WITH **PANARCH** Pvt. Ltd



WORLD TRADE CENTRE
1996

Project involved by principals

This is the first BOI flagship project in Sri Lanka with fully integrated intelligence service with a 39 storied twin tower building. The building comprises of multi-level parking, a Podium block and Two Tower blocks. This was the initiative international project in Sri Lanka under the BOI. After this building most of the Authorities changed their building codes and specifications to par with international standards.

- LOCATION:** Colombo, Sri Lanka
- CLIENT :** Overseas Realty (Ceylon) Ltd
- PRINCIPAL ARCHITECT:** Anthony NG Architects Hong Kong
- CONTRACTOR:** Turner Steiner (USA)
- PROJECT COST:** Rs. 149 million USD

KUMUDU S MUNASINGHE ARCHITECTS
IN ASSOCIATION WITH **PANARCH Pvt. Ltd**

MTV CHANNEL (PVT) LTD
2007



A 9 storey steel framed structure is built on a raft foundation to accommodate offices and a double height studio for MTV channel (Pvt) Ltd. The building is covered with a **double skin glass facade**.

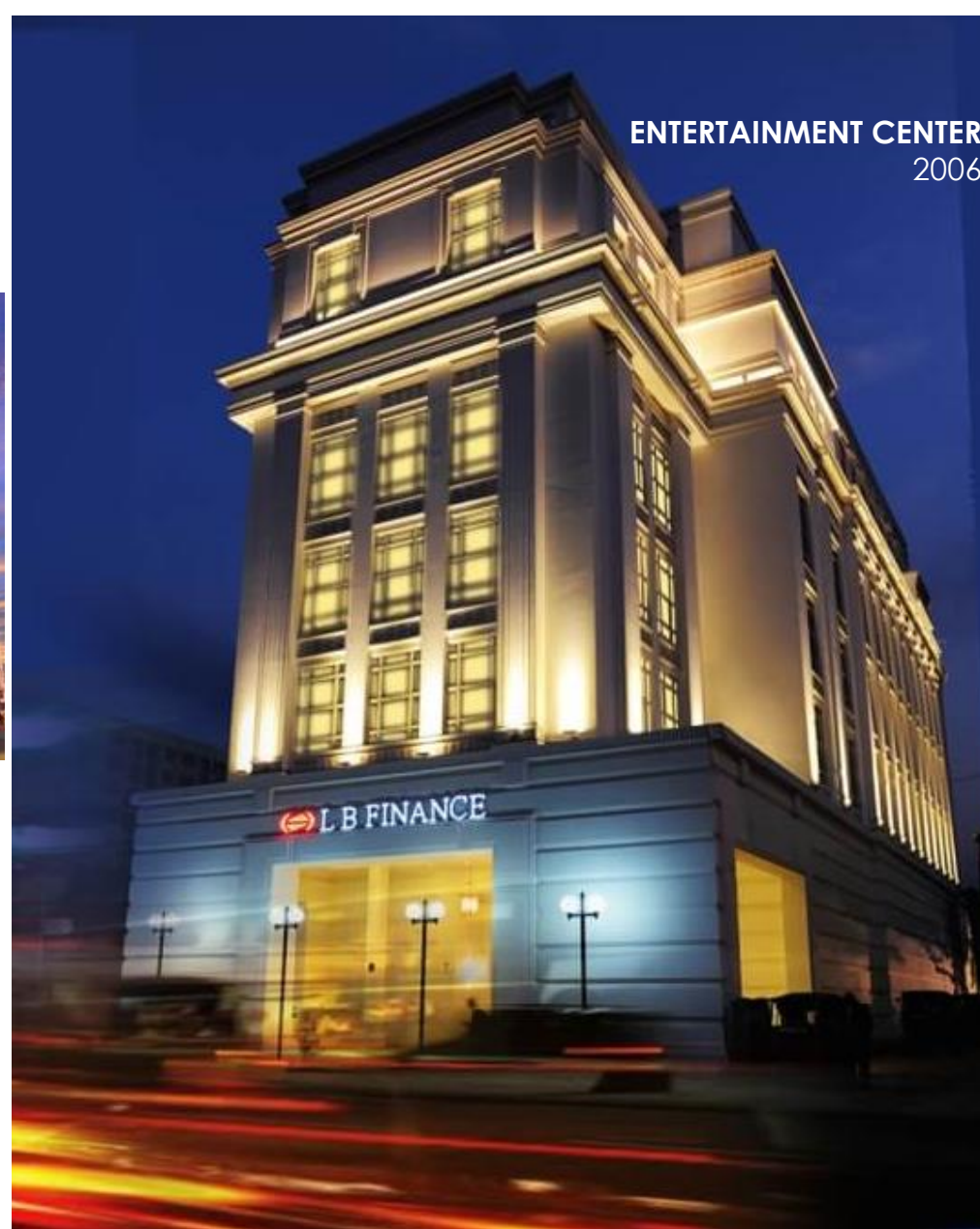
LOCATION: Colombo, Sri Lanka
CLIENT : MTV channel (Pvt) Ltd
CONTRACTOR: N&A Engineering (Pvt) Ltd
PROJECT COST: RS. 360 million

KUMUDU S MUNASINGHE ARCHITECTS
IN ASSOCIATION WITH **PANARCH Pvt. Ltd**

MTV CHANNEL (PVT) LTD
2007



KUMUDU S MUNASINGHE ARCHITECTS
IN ASSOCIATION WITH **PANARCH** Pvt. Ltd



The building was design to accommodate a Casino, a Gaming Center, but later converted in to an office space of LB Finance and other associated companies.

The **Neo Classical Architectural** form has been adopted to enhance the glamorous and richness. The building has two full basement and no structural columns at the center. Total load bearing columns are in the perimeter of the building.

LOCATION: Colombo 04, Sri Lanka

CLIENT: Valibal Lanka Pvt. Ltd

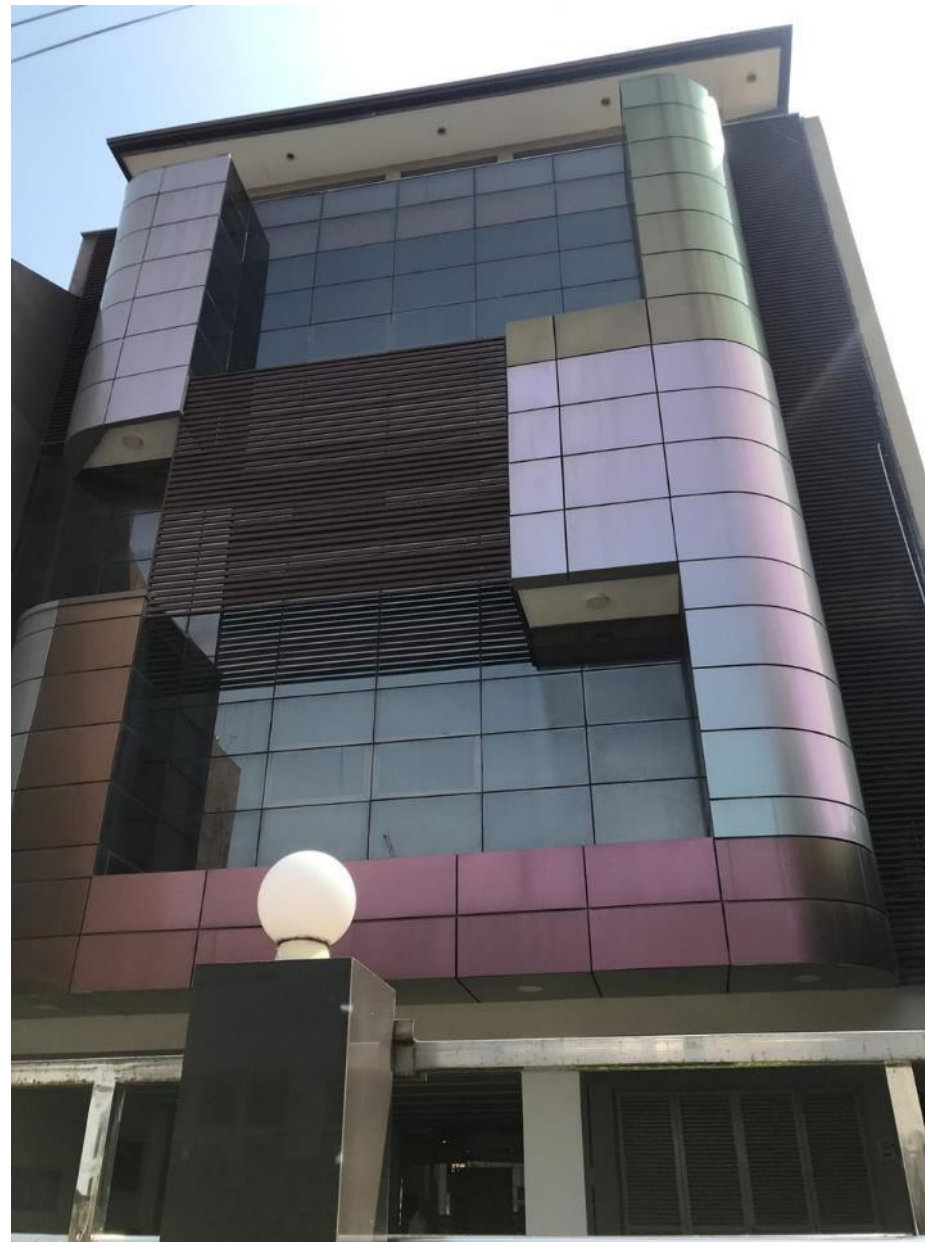
CONTRACTOR: International Construction Consortium for the Foundation work and JC Contractor for the Structure

PROJECT COST: Rs. 350 million

KUMUDU S MUNASINGHE ARCHITECTS
IN ASSOCIATION WITH **PANARCH Pvt. Ltd**



EXPO OFFICE
Clifford avenue, Colombo 03
2017



5 story office building to in-house state art office, IT house and cafeteria. The building is operated in a BMS system with fully integrated electro mechanical service.

CLIENT:
Expo Lanka PLC

LOCATION:
Clifford avenue, Colombo 03

PROJECT COST:
RS. 200 million

KUMUDU S MUNASINGHE ARCHITECTS
IN ASSOCIATION WITH **PANARCH Pvt. Ltd**



EXPO OFFICE
Clifford avenue, Colombo 03
2017

KUMUDU S MUNASINGHE ARCHITECTS
IN ASSOCIATION WITH **PANARCH** Pvt. Ltd



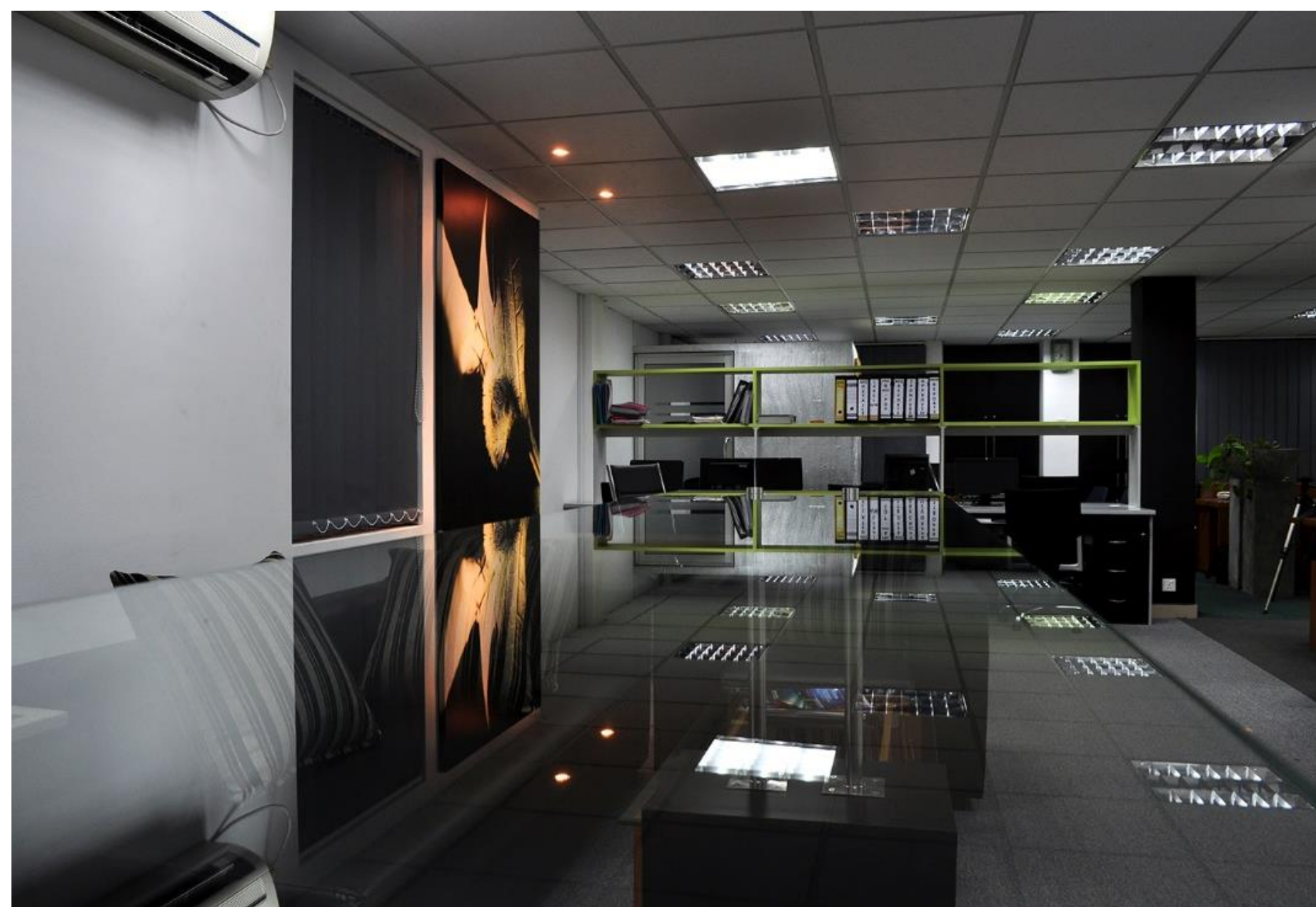
EXPO OFFICE
Clifford avenue, Colombo 03
2017



KUMUDU S MUNASINGHE ARCHITECTS
IN ASSOCIATION WITH **PANARCH** Pvt. Ltd

LANKEM

LANKEM OFFICE INTERIOR



Office interior with 200 workstations Board room and Lounge.

LOCATION:
Union Place, Colombo 02, Sri Lanka

CLIENT:
Lankem Ceylon PLC

KUMUDU S MUNASINGHE ARCHITECTS
IN ASSOCIATION WITH **PANARCH Pvt. Ltd**



LANKEM

LANKEM OFFICE INTERIOR

KUMUDU S MUNASINGHE ARCHITECTS
IN ASSOCIATION WITH **PANARCH** Pvt. Ltd

INTERNATIONAL PROJECTS

CITYGATE SHOPPING CENTRE & THE CRESCENT (TUNG CHUNG)

2001

Project involved by principals



4 level Retail Mall with multi Cinemas, Office Tower & 2100 adjacent housing units laid on a crescent overlooking the sea and the airport in Lantau Island in Hong Kong

LOCATION:
Hong Kong.

CLIENT:
Newfound world
A consortium of Swire Sun Hung Kai
Henderson Land
New World Development

CONTRACTOR:
Hip Hing, Gammon Vibro.



KUMUDU S MUNASINGHE ARCHITECTS
IN ASSOCIATION WITH **PANARCH Pvt. Ltd**

INTERNATIONAL PROJECTS

WORLD TRADE CENTER, DUBAI
1980
Project involved by principals



28 story office complex & 250 Bedroom Hilton Hotel to in house an iconic World Trade Centre Building . The façade of the building has been done with pre cast concrete panels.

LOCATION: Dubai
CLIENT: Rashid Family
CONTRACTOR: Bernard Sonley

KUMUDU S MUNASINGHE ARCHITECTS
IN ASSOCIATION WITH **PANARCH Pvt. Ltd**

INTERNATIONAL PROJECTS



MEDICAL CITY – IRAQ

1985

Project involved by principals

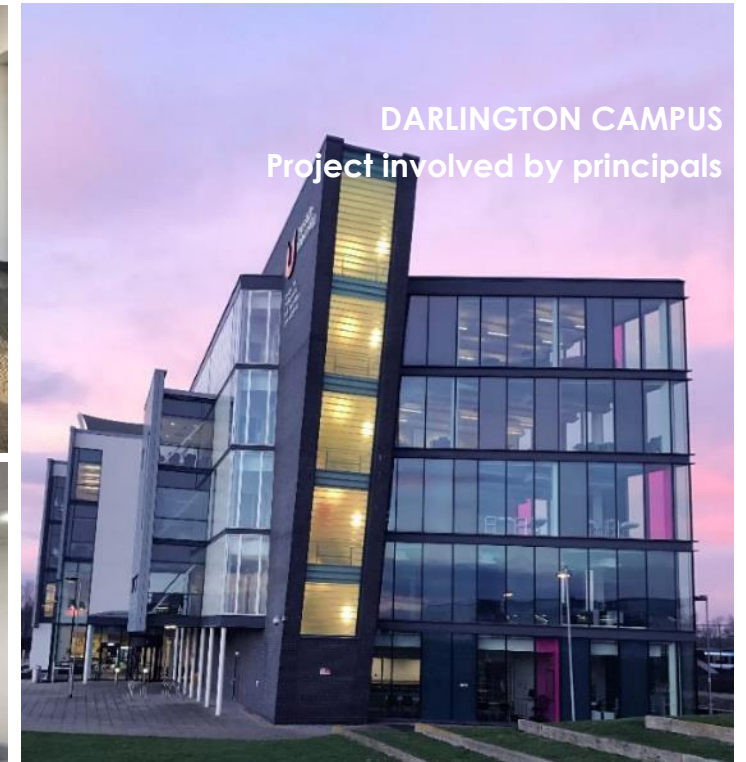


650 bed Surgical Hospital with ancillary hospital facilities (Iraq). The project consist of series of operation theaters and the supporting facilities. The project was considered one of the largest projects in Iraq at the time of Sudam Hussain regime.

LOCATION: Iraq
CLIENT: Government Of Iraq
CONTRACTOR: Hyundai (Korea)

KUMUDU S MUNASINGHE ARCHITECTS
IN ASSOCIATION WITH **PANARCH Pvt. Ltd**

INTERNATIONAL PROJECTS



DARLINGTON CAMPUS
Project involved by principals

The five story building's primary purpose is teaching, business development and shared learning. It also incorporates a library, double-height café space, staff facilities and independent entrances for students and corporate users. Situated on a brown field site next to the main East Coast rail line, the project posed a number of technical challenges, particularly in terms of acoustics.

The project was awarded LEEDS Gold by Green Building Council in USA.

LOCATION: Darlington.

CLIENT: Teesside University

PROJECT COST: 15 million GBP

KUMUDU S MUNASINGHE ARCHITECTS
IN ASSOCIATION WITH **PANARCH Pvt. Ltd**





INDUSTRIAL PROJECTS

KUMUDU S MUNASINGHE ARCHITECTS
IN ASSOCIATION WITH **PANARCH** Pvt. Ltd



OFFICE BUILDING
For Expo Logistic Park at
Orugodawatta, Wallampitiya
2015



The project comprises of 5 story building and 3 story large spam building which facilitate with ultra-modern state of the art workspace consists of **Office spaces, Restaurant, Retail, Mini Cinema, Swimming Pool** and other related services, which is housing 400 employees. The concept for the interior to create a free, open spaced office center to reduce the stress by the high-tension work. A simple, basic color scheme was used to make the surroundings peaceful and relaxed. [Total area – 46,000 sq.ft.]

The project was awarded LEEDS Gold by Green Building Council in USA.

LOCATION: Orugodawaththa, Wallampitiya

CLIENT: Expo Lanka (Pvt) Ltd

CONTRACTOR: Numerous Sub Contractures

PROJECT COST: RS. 1300 Million

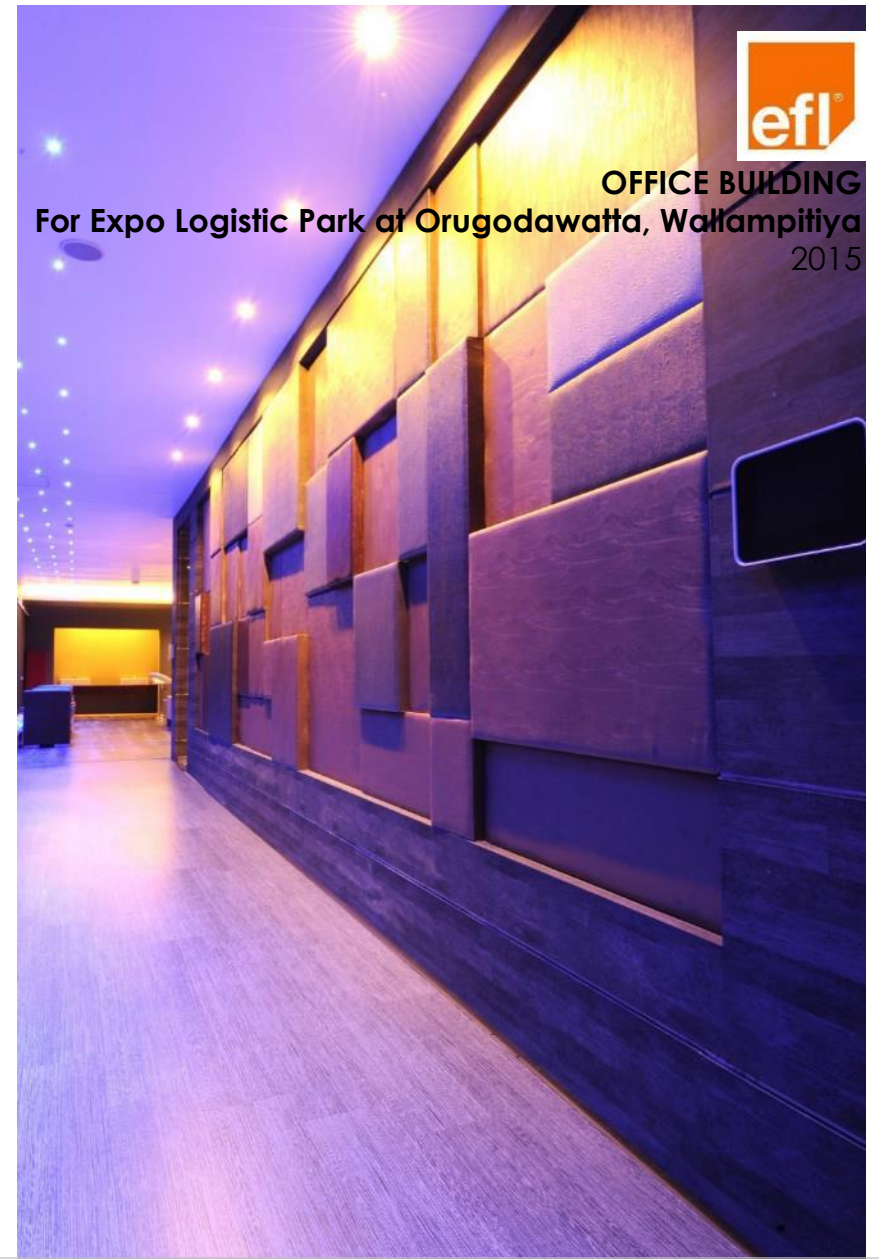
KUMUDU S MUNASINGHE ARCHITECTS
IN ASSOCIATION WITH **PANARCH Pvt. Ltd**



OFFICE BUILDING
For Expo Logistic Park at
Orugodawatta, Wallampitiya
2015



KUMUDU S MUNASINGHE ARCHITECTS
IN ASSOCIATION WITH **PANARCH** Pvt. Ltd



OFFICE BUILDING
For Expo Logistic Park at Orugodawatta, Wallampitiya
2015



KUMUDU S MUNASINGHE ARCHITECTS
IN ASSOCIATION WITH **PANARCH** Pvt. Ltd

EFL CAMPUS ACCREDITED AS SRI LANKA'S FIRST LEED GOLD FACILITY

Sri Lanka's first and only LEED Gold Certified Office and Logistic Park. LEED (Leadership in Energy & Environmental Design) is a green building certification program developed by USGBC that recognizes best-in-class building strategies and practices. To receive LEED certification, building projects have to earn points based on design and usage with Gold being the second highest tier in the points table. This marks a new and significant milestone for EFL in their continued effort to focus on sustainability in all their operations and business practices.

Mr. Aazim Nafaiz (Director Carbon Solutionz) handing over certificate to Mr. Saif Yusoof (Managing Director EFL Sri Lanka)



**LANKEM FACTORY
2015**

A factory building built in Trincomalee with diverse types of challenges. The initial design was to build a factory building where the outlook was implemented beyond the standard factory look. The building is to facilitate the requirements of a typical factory. The colors used at the exterior and interior enhances the uniqueness of the building that expresses the informality than a typical factory building which capture the boundlessness of the site all over the design

LOCATION:

Trincomalee , Sri Lanka

CLIENT:

Lankem Ceylon PLC

Cost :

Rs. 85 million

INTERNATIONAL PROJECTS



The project is work-wear production plant. The building was designed with the requirements to obtain the LEED Gold rating from the United States Green Building Council. In order to that interventions are applied not only for the design of the facility but also the construction process. Design development was based on Parking capacity, Maximize Open Space, Storm water Design, Heat Island Effect, Light Pollution Reduction, Water Use Reduction, Water Efficient Landscaping, Innovative Wastewater Technologies, Storage & Collection of Recyclables, Increased Ventilation, Low-Emitting Materials and Thermal Comfort. The facility mainly consists of cutting area in ground floor and Stitching area in first floor with other related facilities. The main structure of the building is steel to achieve the large spans.

Project was awarded LEEDS Platinum by Green Building Council USA.

LOCATION: Pathein Special Economic Zone. Myanmar.

CLIENT: Amava Apperal .LTD

PROJECT COST: 20 Million USD



The project is work-wear production plant. The building was designed with the requirements to obtain the LEED Gold rating from the United States Green Building Council. In order to that interventions are applied not only for the design of the facility but also the construction process. Design development was based on Parking capacity, Maximize Open Space, Storm water Design, Heat Restriction Effect, Light Pollution Reduction, Water management system for efficient Landscaping, Innovative Wastewater Technologies, Storage & Collection of Recyclables, Increased Ventilation, Low-Emitting Materials and Thermal Comfort. **The facility mainly consists of cutting and stitching area in ground floor and offices in first floor with other related facilities.** The main structure of the building is steel to achieve the large spans.

Project was awarded LEEDS Platinum by Green Building Council USA.

LOCATION:

Plot 24 & 25 Delta Industrial Zone, Pathein Township, Ayarwaddy Region, Myanmar.

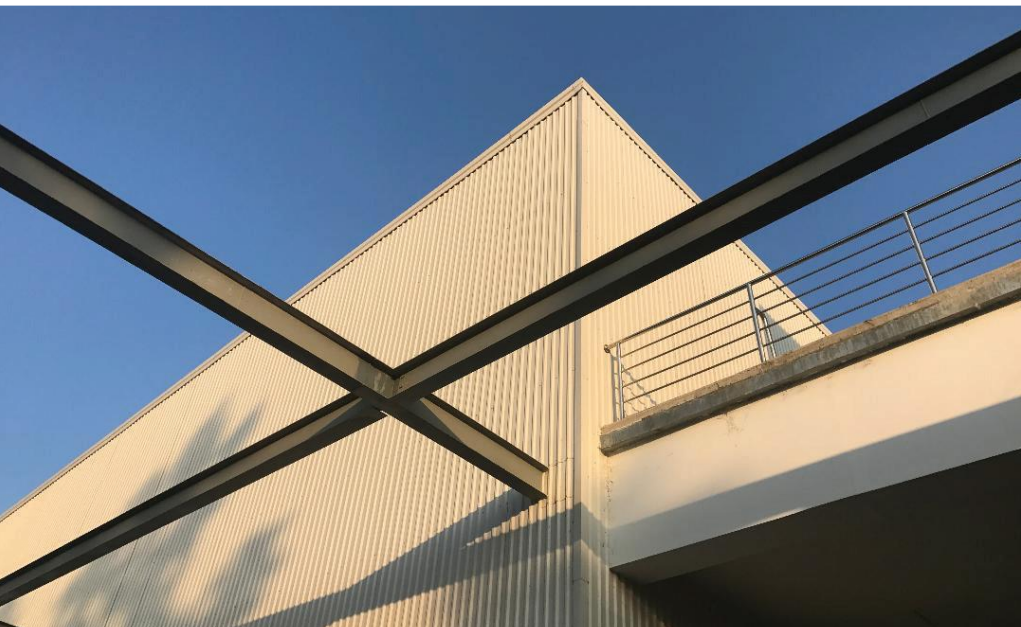
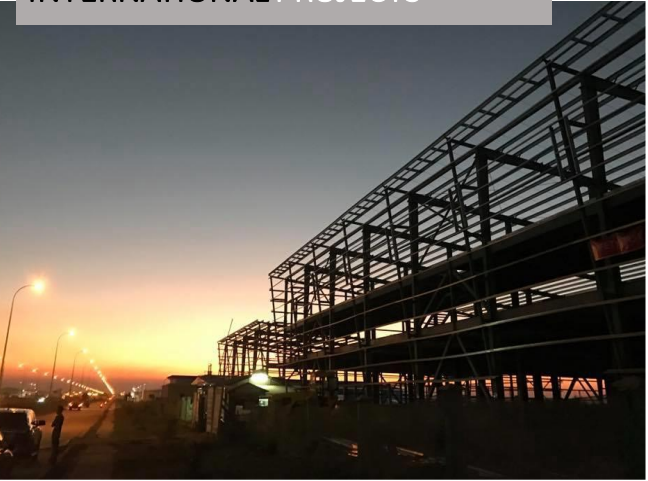
CLIENT:

Amava Apparel Ltd.

PROJECT COST:

12 Million USD

INTERNATIONAL PROJECTS



GARMENT FACTORY for GUSTON AMAVA AT THILAWA, YANGOON, MYANMAR

2017-2019

INTERNATIONAL PROJECTS



The project is work-wear production plant. The building was designed with the requirements to obtain the LEED Gold rating from the United States Green Building Council. In order to that interventions are applied not only for the design of the facility but also the construction process. Design development was based on Parking capacity, Maximize Open Space, Storm water Design, Heat Island Effect, Light Pollution Reduction, Water Use Reduction, Water Efficient Landscaping, Innovative Wastewater Technologies, Storage & Collection of Recyclables, Increased Ventilation, Low-Emitting Materials and Thermal Comfort. **The facility mainly consists of cutting area in ground floor and Stitching area in first floor with other related facilities.** The main structure of the building is steel to achieve the large spans.

Project was awarded LEEDS Platinum by Green Building Council USA.

LOCATION: Thilawa Special Economic Zone. Yangon , Myanmar.

CLIENT: Guston Amava .LTD

PROJECT COST: 24 Million USD





RETAIL PROJECTS

KUMUDU S MUNASINGHE ARCHITECTS
IN ASSOCIATION WITH **PANARCH** Pvt. Ltd



F&S TEA LOUNGE

R.A. De Mel Mawatha, Colombo

2017



This is a design and built project carried out to introduce Sri Lankan tea lounge in the city. The work include total interior of the lounge with the services. The project is developed with the essence of the tea culture, identified niche detailing and creating an ambience to suite.

LOCATION:

R.A.De Mel Mawatha, Colombo.

PROJECT COST:

RS. 35 million

KUMUDU S MUNASINGHE ARCHITECTS

IN ASSOCIATION WITH

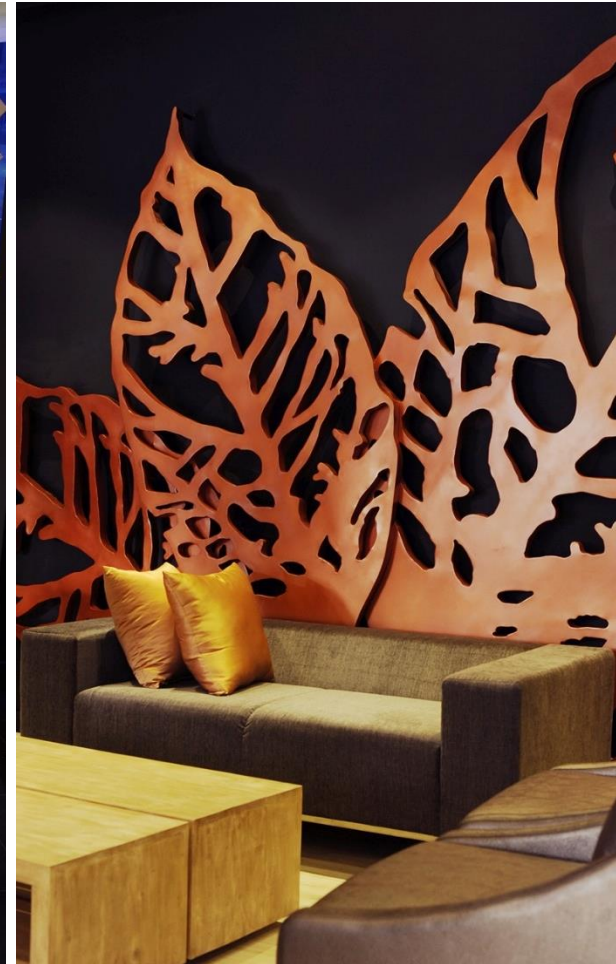
PANARCH Pvt. Ltd



F&S TEA LOUNGE

R.A. De Mel Mawatha, Colombo

2017



KUMUDU S MUNASINGHE ARCHITECTS
IN ASSOCIATION WITH **PANARCH** Pvt. Ltd



F&S TEA LOUNGE

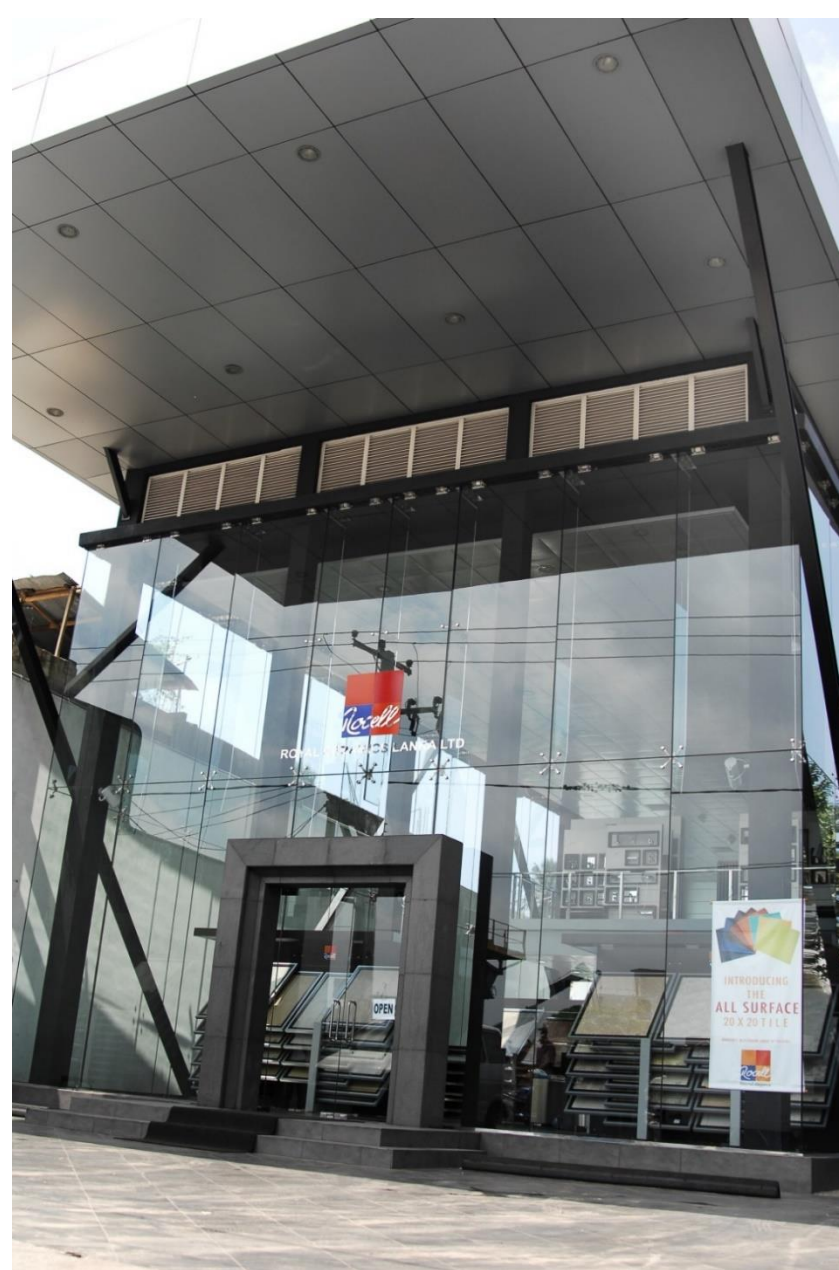
R.A. De Mel Mawatha, Colombo

2017



KUMUDU S MUNASINGHE ARCHITECTS
IN ASSOCIATION WITH **PANARCH** Pvt. Ltd

ROYAL CERAMICS SHOWROOM (ROCELL)
2008

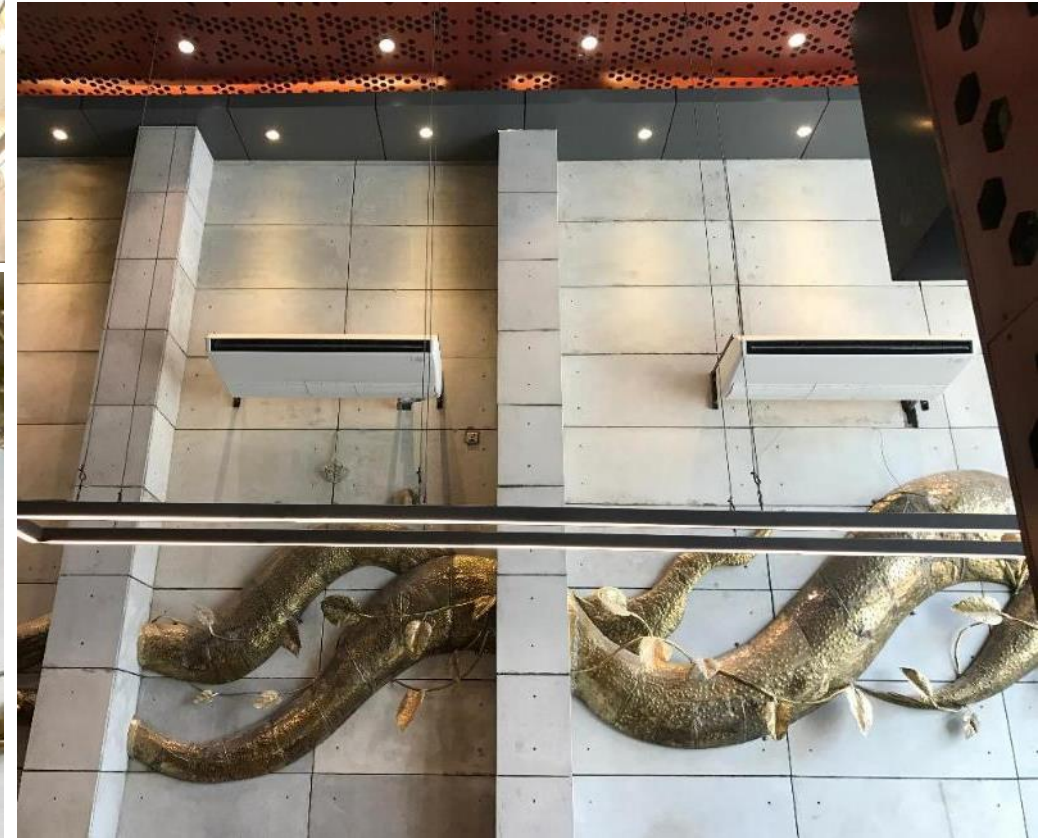
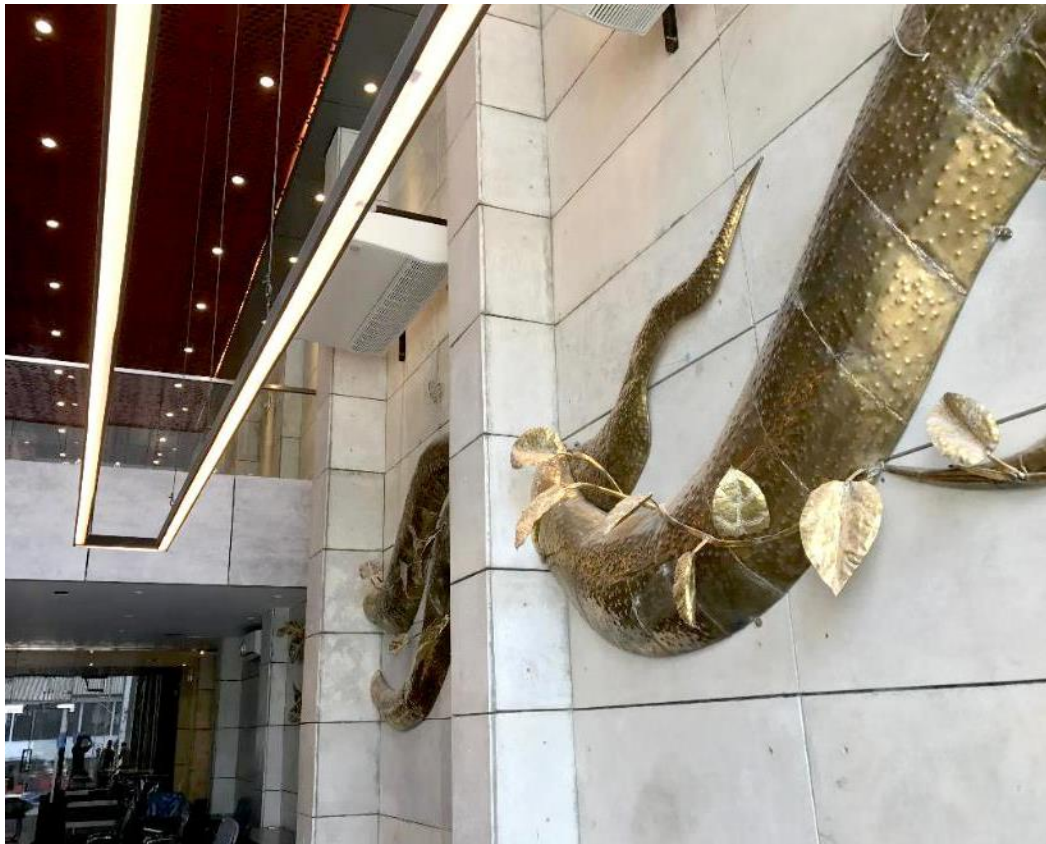


8,000 sq. ft. flagship showroom with mezzanine and Meeting Rooms. The project was constructed with complete steel structure padded with double height glass façade to accommodate best selling.

LOCATION: Colombo, Sri Lanka
CLIENT: Royal Ceramics Lanka Ltd
CONTRACTOR: Pasalka Builders
PROJECT COST: RS. 80 million

KUMUDU S MUNASINGHE ARCHITECTS
IN ASSOCIATION WITH **PANARCH Pvt. Ltd**

TOMAHAWK MARKETING OFFICE



This unique concept of four storied building was brought up to in house the main office of the Tomahawk Bicycle Dealer. The double height main hall with a highlighted deco ceiling and the sculpture on a side wall has been created.

LOCATION: Dam Street , Sri Lanka

CLIENT: Tomahawk (Pvt) Ltd

COST: Rs. 70 million

KUMUDU S MUNASINGHE ARCHITECTS
IN ASSOCIATION WITH **PANARCH Pvt. Ltd**

**Motor Spare Parts shop
2005 / 2007**

A concept beyond a motor spare part shop this project highlights a concept where the creativity and the art is brought forward with the usage of elements related to the key function of this place. The exterior of the building is a solid concrete building where the ground floor façade is finished with glasses where the expression of minimalism is enhanced throughout the whole project. Yet the front façade is done with a solid metal door and an artistic name board which truly grabs one's eyes at a glance.





RESIDENTIAL PROJECTS

KUMUDU S MUNASINGHE ARCHITECTS
IN ASSOCIATION WITH **PANARCH** Pvt. Ltd

CRESCAT RESIDENCIES
2008



24 story Apartment Tower and multi-level Shopping Mall next to Cinnamon Grand Hotel, Colombo.
The project was built with two basements and a shopping mall. This was the first luxury apartment project in Sri Lanka which was designed by WATG Architects from Hawaii and the local consultant was Design Consortium Ltd.

LOCATION: Colombo , Sri Lanka

CLIENT : Crescat Developments Limited

CONTRACTOR: Mitsui (Japan)

PROJECT COST: RS. 3260 million

KUMUDU S MUNASINGHE ARCHITECTS
IN ASSOCIATION WITH **PANARCH Pvt. Ltd**

MONARCH TOWER
2008



197 luxury Apartments with Recreation Centre & Car Parking built on existing Crescat Boulevard where the existing columns strengthen and new RCC jacketing introduced to transfer the load to the existing pile foundation.

- LOCATION:** Crescat City (on top of the existing Crescat Boulevard Shopping Mall)
- CLIENT:** Asian Hotels & Properties PLC
- CONTRACTOR:** Singapore Piling & Civil Engineering Ltd
- PROJECT COST:** RS. 3,200 million



18 storied twin tower project done with two basement levels in house Seylan bank head office and 18 luxury apartments with a roof top swimming pool which was novel at the time of completion in 2000. The building was constructed. With no columns at the center of the building. The full length framework to support all the office floors

LOCATION: Galle Road, Colombo-03
CLIENT : Ceylinco Seylan developments plc
PROJECT COST: RS. 7500 million



CEYLINCO SEYLAN TOWERS
2000
Resident Architect



2010 COLOUR
AWARD



THE TAMARIND 2005

The design approach was based on a review of the condition of the site and its shape, and to respond to its surroundings. The functions related to each other had to be considered as well. The 'L' shape configuration of the main building allowed the creation of a versatile interior. The different spaces receiving through the house make each other to create many views and vistas. The extension of the interior spaces towards the exterior linked perfectly with its intermediate spaces and makes it blend with the immediate nature. The approach also makes a harmonious relationship between the interior and exterior by its shape and focus, which austerity to reflect the surroundings.

LOCATION:
Koswatte, Thalangama North

CLIENT:
Mrs. Amitha Yapa

PROJECT COST:
RS. 44 million

KUMUDU S MUNASINGHE ARCHITECTS
IN ASSOCIATION WITH **PANARCH Pvt. Ltd**



THE TAMARIND
2005

KUMUDU S MUNASINGHE ARCHITECTS
IN ASSOCIATION WITH **PANARCH** Pvt. Ltd

THE TAMARIND
2005



THE TAMARIND
2005





CUBE HOUSE 2009

The rectangular cube has emerge from the bank of the lake to capture the view across the ripple of the water towards the lush greenery beyond. It is a place relax and rejuvenate yourself, and enjoy the nature. The main structure is concrete and bricks raised from the bank of the lake to get the maximum benefit of the view. The wide glass panels and elevated floor allows you to capture wide perspective from the living room and bed rooms as well as it links the nature and the building together. The simple cube added the contrast to the surround by its own shape and its reaction to the lights falling to the building during the day. In the morning it is started to glitter with the rising sun light and hide in the noon with direct sun in barren bank of the lake, The evening is different falling sunlight and shadow make romantic atmosphere.

LOCATION:
Ruskin Islands, Bolgoda

CLIENT:
Mr. Kesara Serasinghe

PROJECT COST:
RS. 80 million

CUBE HOUSE
2009



KUMUDU S MUNASINGHE ARCHITECTS
IN ASSOCIATION WITH **PANARCH** Pvt. Ltd

HOLIDAY HOUSE AT WELIGAMA
2010



The house is renovated to get its 160 years old heritage and also accommodate new features such as swimming pool, bedrooms and dining facilities. The original house was in vary dilapidated condition and also relatively much smaller. We developed this project with new requirement of the client to accommodate more bedrooms as well as the old architectural styles.

LOCATION:
Weligama, Matara

ROJECT COST:
RS. 80 million

KUMUDU S MUNASINGHE ARCHITECTS
IN ASSOCIATION WITH **PANARCH Pvt. Ltd**

NEW HOUSE AT NUWARA ELIYA
2013



LOCATION: Nuwaraeliya , Sri Lanka

PROJECT COST: RS. 18 million

KUMUDU S MUNASINGHE ARCHITECTS
IN ASSOCIATION WITH **PANARCH Pvt. Ltd**

HOUSE AT BATTARAMULLA
2017



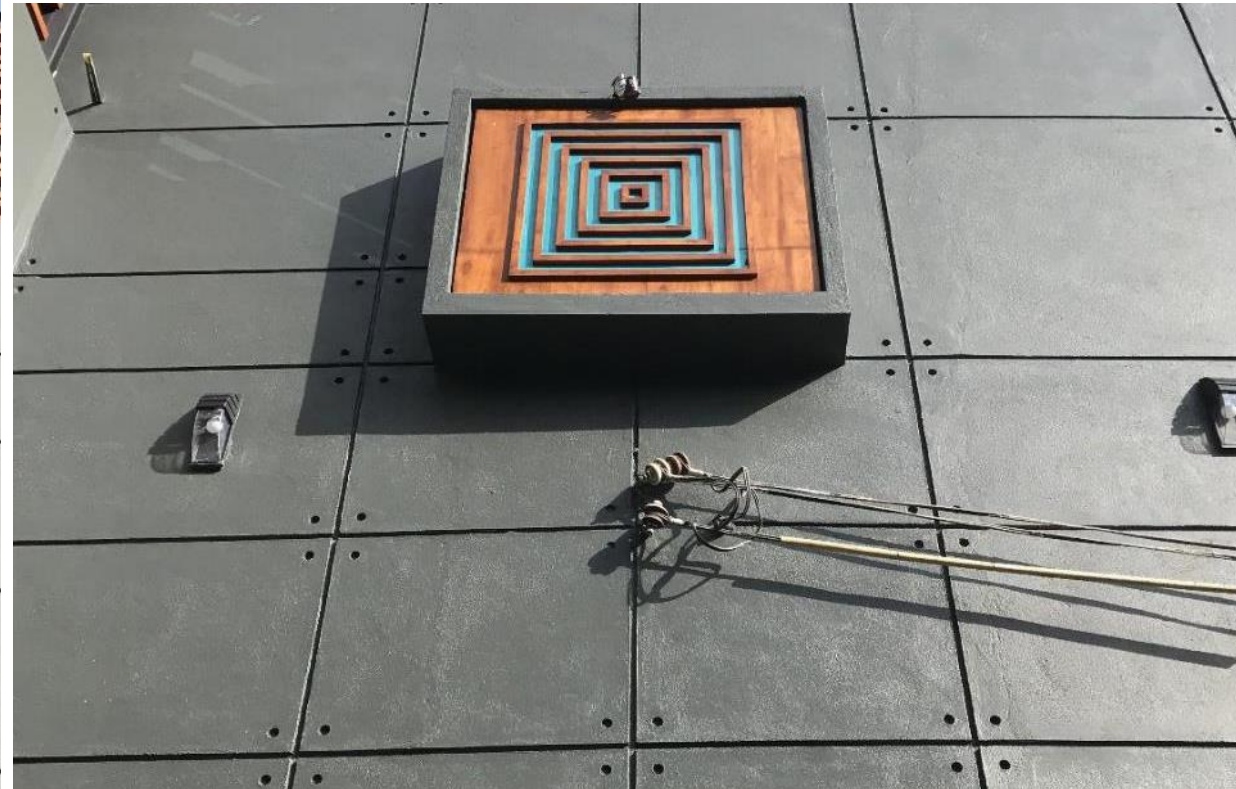
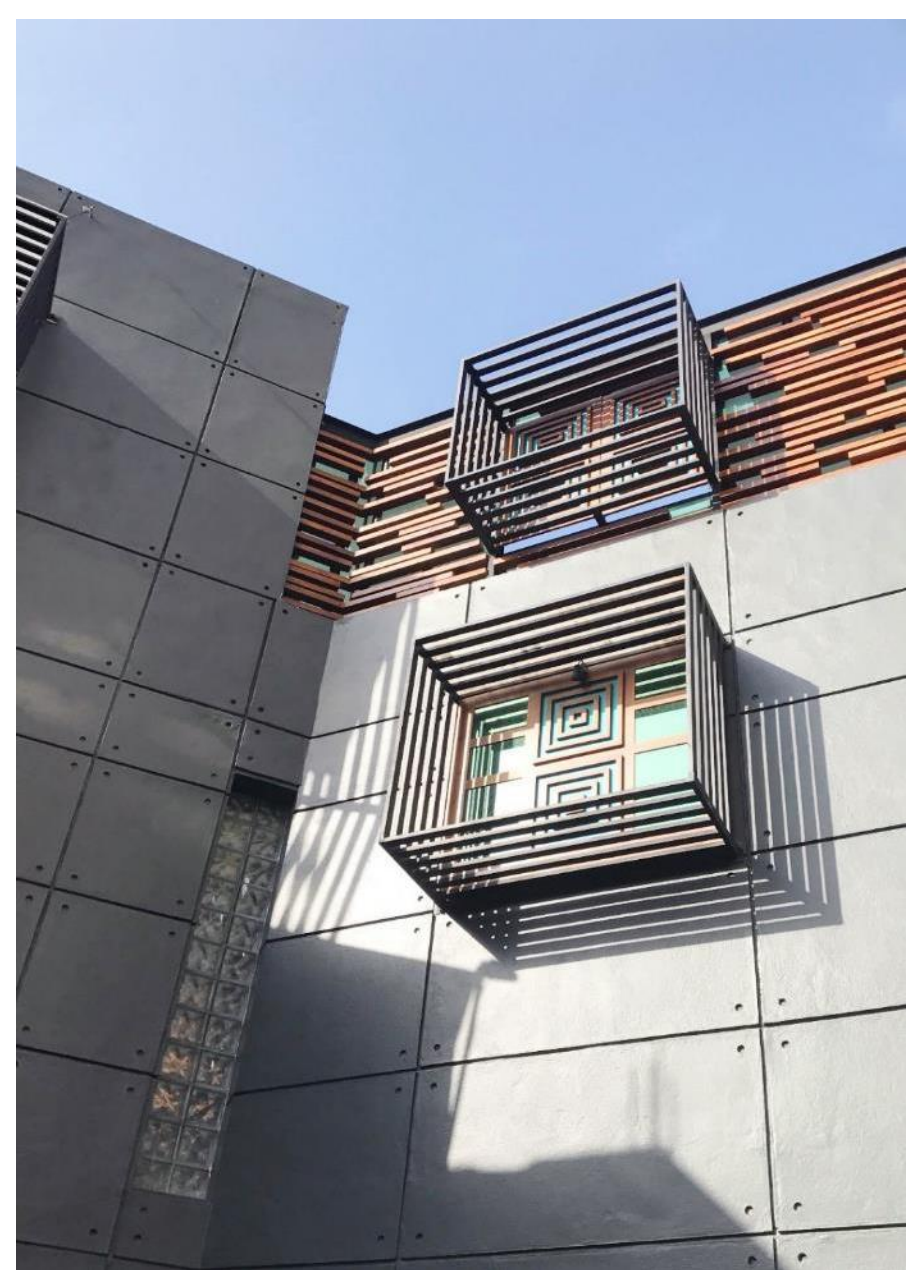
The house was designed highlighting the applicability of concrete where the concept of minimalism was brought forward all over the design. The 03 bedroom personalized house with site constrains and located in a very small land extend

LOCATION: Baththaramulla, Thalangama North

PROJECT COST: RS. 20 million

KUMUDU S MUNASINGHE ARCHITECTS
IN ASSOCIATION WITH **PANARCH Pvt. Ltd**

FAZMIL MOHAMED HOUSE AT DEHIWALA
2017



The house was designed highlighting the applicability of concrete where the concept of minimalism was brought forward all over the design. The 05 bedroom personalized house with site constrains and located in a very small land extend

LOCATION: Dehiwala , Colombo

CLIENT: Mr.Fazmil Mohamed

PROJECT COST: RS. 90 million

KUMUDU S MUNASINGHE ARCHITECTS
IN ASSOCIATION WITH **PANARCH Pvt. Ltd**

BOUTIQUE HOTEL AT NUWARA ELIYA
2019



This house which is located in the heart of the city of Nuwara Eliya celebrates the Tudor architectural style that creates unique ambiances and exterior. The design was implemented responding to the natural setting where the roof and the shape of the building was derived according to the medieval architecture in England that blends with the climatic conditions and the topography.

LOCATION: Nuwara Eliya

CLIENT: Mr. Mohamed Irshad

PROJECT COST: Rs. 110 Million

KUMUDU S MUNASINGHE ARCHITECTS
IN ASSOCIATION WITH **PANARCH Pvt. Ltd**

BOUTIQUE HOTEL AT NUWARA ELIYA
2019



KUMUDU S MUNASINGHE ARCHITECTS
IN ASSOCIATION WITH **PANARCH** Pvt. Ltd

BOUTIQUE HOTEL AT NUWARA ELIYA
2019







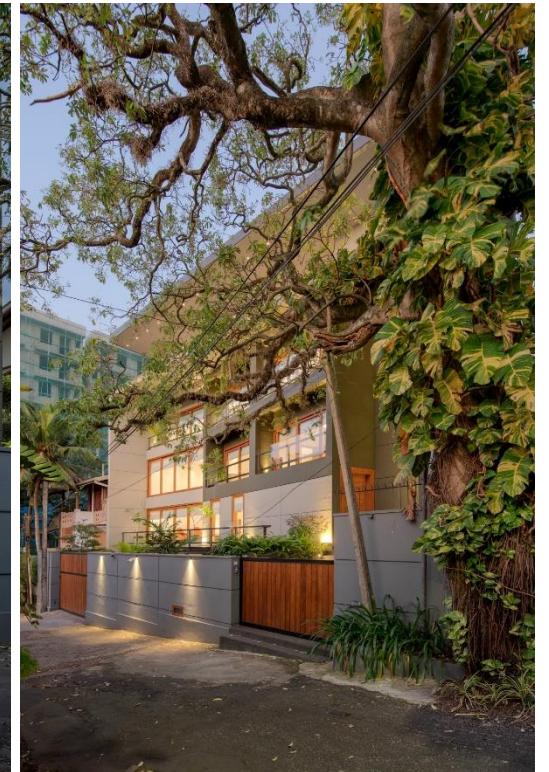
BOUTIQUE HOTEL AT NUWARA ELIYA
2019

BOUTIQUE HOTEL AT NUWARA ELIYA
2019



KUMUDU S MUNASINGHE ARCHITECTS
IN ASSOCIATION WITH **PANARCH** Pvt. Ltd

Mr. INDIKA HOUSE AT THIMBIRIGASYAYA
2019



The extension of the interior spaces towards the exterior linked perfectly with its intermediate spaces and makes it blend with the immediate nature. The approach also makes a harmonious relationship between the interior and the exterior by its shape and focus, which austerity to reflect the surroundings. The materials and the colors used in the interior blend seamlessly with the surrounding giving the ambience a sense of richness and elegance.

LOCATION: Thimbirigasyaya

CLIENT: Mr. Indika Dodangoda

PROJECT COST: RS. 70 Million

KUMUDU S MUNASINGHE ARCHITECTS
IN ASSOCIATION WITH **PANARCH Pvt. Ltd**

Mr. INDIKA HOUSE AT THIMBIRIGASYAYA
2019



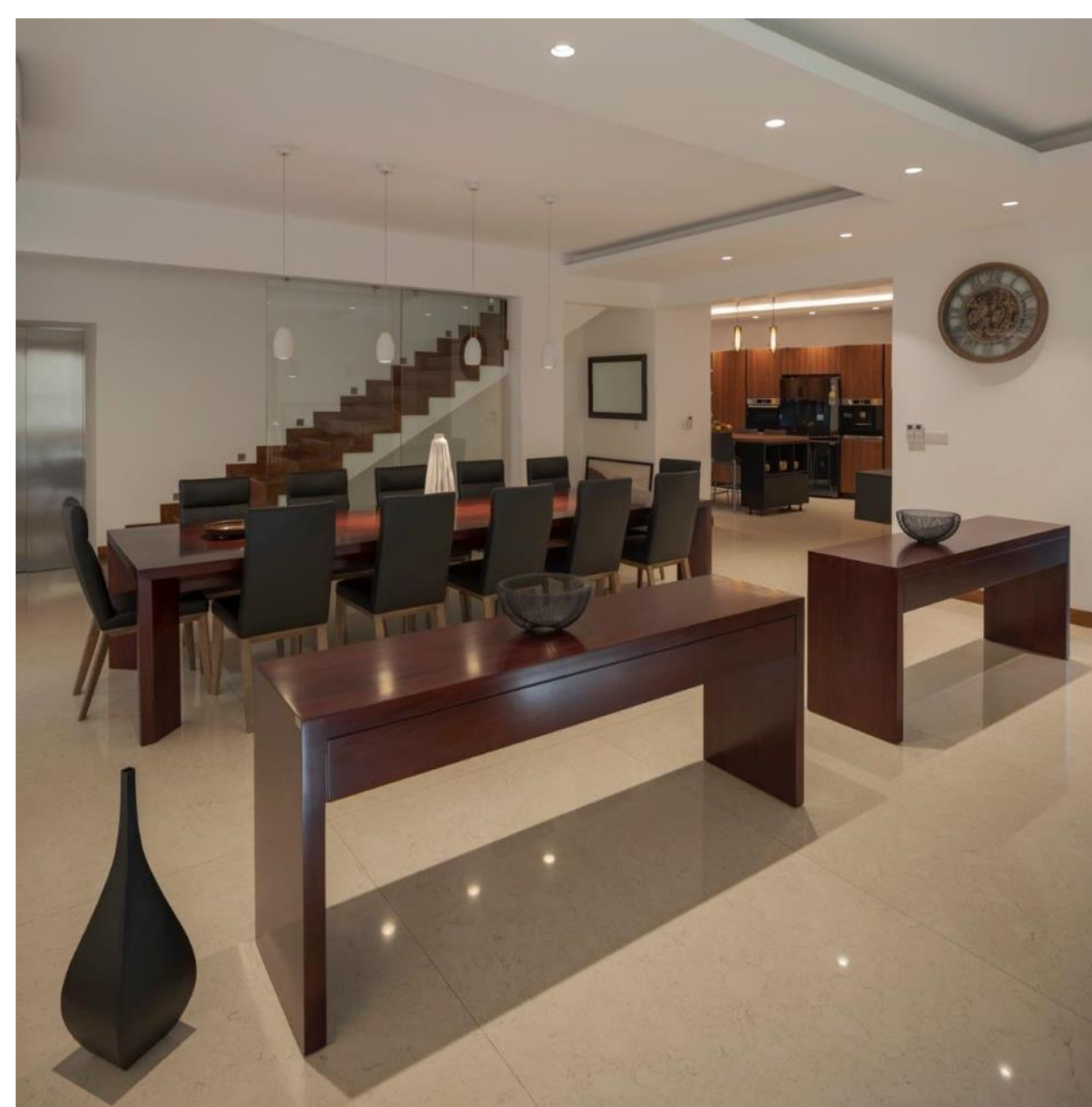
KUMUDU S MUNASINGHE ARCHITECTS
IN ASSOCIATION WITH **PANARCH** Pvt. Ltd

Mr. INDIKA HOUSE AT THIMBIRIGASYAYA
2019



KUMUDU S MUNASINGHE ARCHITECTS
IN ASSOCIATION WITH **PANARCH** Pvt. Ltd

Mr. INDIKA HOUSE AT THIMBIRIGASYAYA
2019







PROPOSED PROJECTS

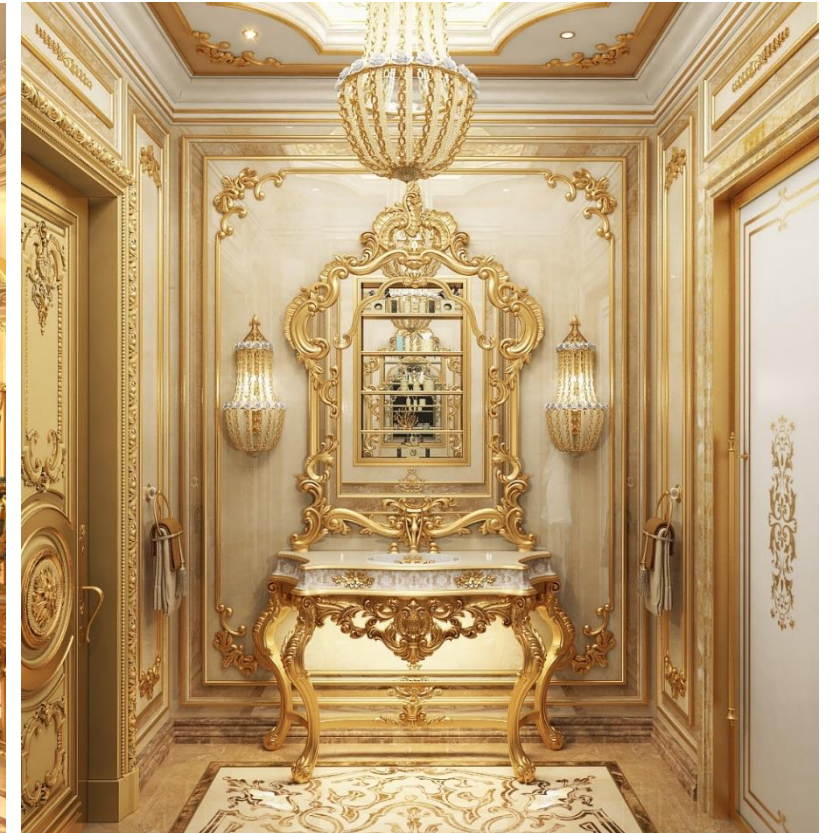
ONGOING MANOR HOUSE
Asia Broadcasting Corporation (Pvt) Ltd



The design was implemented in a 150 perch land in Colombo where the house consist of several lounges, bed rooms, kitchens, swimming pools etc. The Neo Classical architectural culture was applied throughout the design since the trend was rooted in client's mind. The design was developed with classical architectural influence with a renaissance interior touch.

LOCATION: Chitra Lane, Colombo 05.
CLIENT: Asia Broadcasting Corporation (Pvt) Ltd
PROJECT COST: RS. 1,000 million

KUMUDU S MUNASINGHE ARCHITECTS
IN ASSOCIATION WITH **PANARCH Pvt. Ltd**



**ONGOING REFURBISHMENT OF GAFOOR BUILDING AT
COLOMBO**
2015



The old Gafoor Building structure was preserved and new structural elements added to support the existing façade. The all interior structure was design to in-huse a Boutique hotel.

LOCATION: Sir. Baron Jayathilaka Mawatha, Colombo 01

CLIENT: Urban Development Authority.

PROJECT COST: RS. 1,200 million

KUMUDU S MUNASINGHE ARCHITECTS
IN ASSOCIATION WITH **PANARCH Pvt. Ltd**

ONGOING SHOOTING RANGE AT BATTARAMULLA, SRI LANKA 2018



Building was design to cater the national and international tournaments and individual practices as well with the standard facilities for shooting ranges which includes 25m & 50m Riffle ranges and two 10m Air range. Project is responded to the existing natural surroundings of Diyawanna Oya with sustainability approach where building is built on concrete stilts without harming the natural wet land. Minimum use of concrete and use of timber and steel, solar power, waste water and sewerage treatment plant and non- disturbance to the landscape minimize the damage to the nature. Total floor area – 4122 sqm.

LOCATION: Waters edge, Battaramulla , Sri Lanka

CLIENT Ministry of Sports , Sri Lanka

PROJECT COST: RS. 350 million

KUMUDU S MUNASINGHE ARCHITECTS
IN ASSOCIATION WITH **PANARCH Pvt. Ltd**

ONGOING APARTMENT COMPLEX AT KIRIMANDALA MW, COLOMBO 05
2017



12 storied apartment building located along the canal. The project comprises of 56 apartments and roof top swimming pool Gymnasium and a spa. The multi-level parking at lower floor will accommodate 60 cars

LOCATION: Kirimandala Mw, Colombo 05
CLIENT: Access Residencies 2 (pvt) Ltd
PROJECT COST: RS. 1,500 million

KUMUDU S MUNASINGHE ARCHITECTS
IN ASSOCIATION WITH **PANARCH Pvt. Ltd**



72 storied office building at Murcury Square to accommodate new requirements arises with the present economic upturn. The project comprises with banks, financial institutions, cafés, restaurants in top floor and the lounge space for the business discussion as well as auditorium

LOCATION: Myanmar.

PROJECT COST: 250 USD

PROPOSED CBL FACTORY AT RANALA, SRI LANKA 2019

The project is to in-house industrial facilities and office for the CBL. The proposed facility has designed with the requirements to obtain the LEED Gold rating from the United States Green Building Council. In order to that interventions are to be applied not only for the design of the facility but also the construction process. Design development is based on Parking capacity, Maximize Open Space, Storm water Design, Heat Island Effect, Light Pollution Reduction, Water Use Reduction, Water Efficient Landscaping, Innovative Wastewater Technologies, Storage & Collection of Recyclables, Increased Ventilation, Low-Emitting Materials and Thermal Comfort. The facility mainly consists of General facility area in the ground floor and Office area in first floor with other related facilities. The main structure of the building is steel to achieve the large spans.

LOCATION: Ranala, Sri Lanka.

CLIENT: Ceylon Biscuit Limited



KUMUDU S MUNASINGHE ARCHITECTS
IN ASSOCIATION WITH **PANARCH Pvt. Ltd**

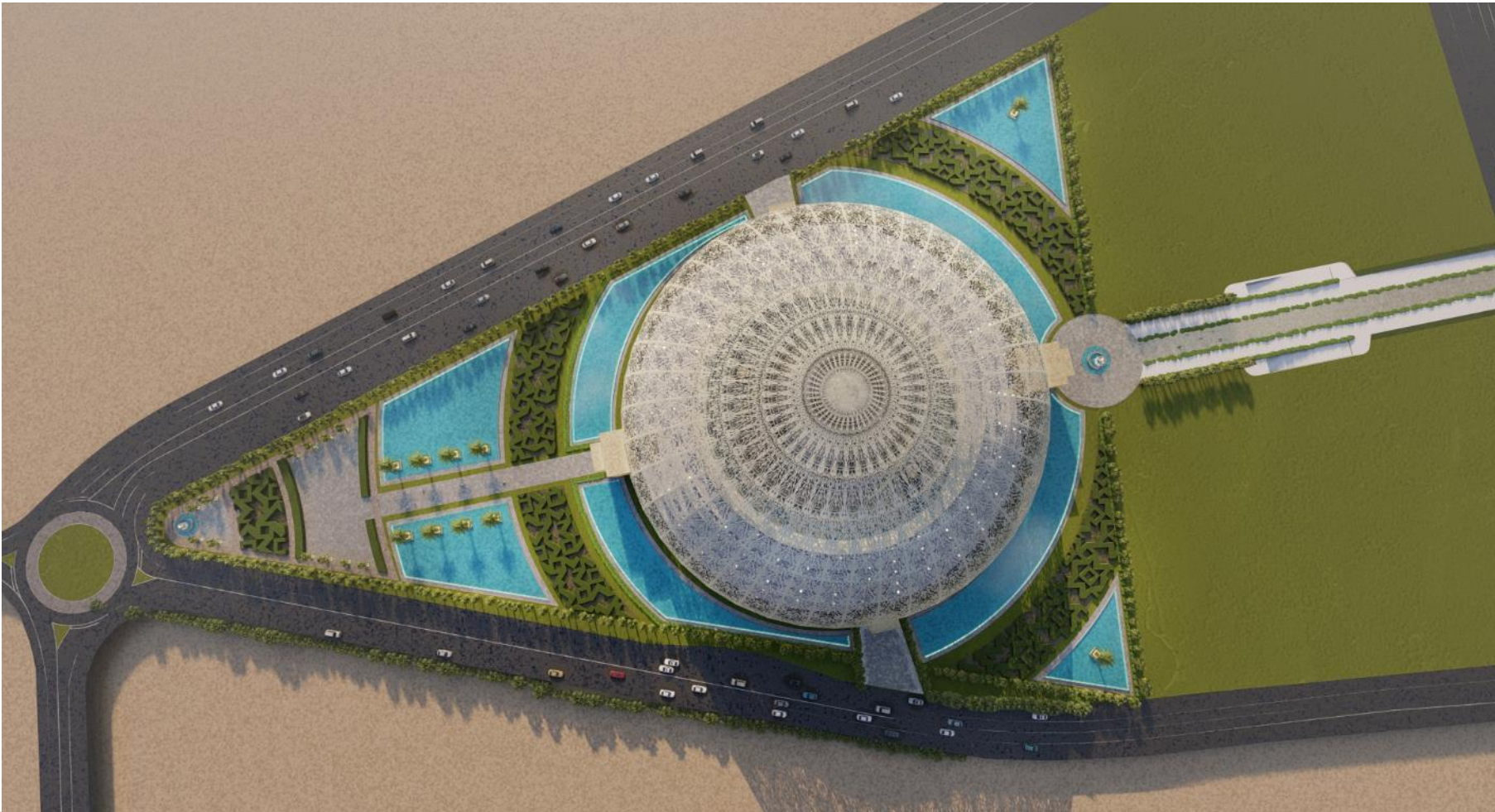
PROPOSED FACTORY BUILDING FOR CBL AT RANALA, SRI LANKA
2019



KUMUDU S MUNASINGHE ARCHITECTS
IN ASSOCIATION WITH **PANARCH** Pvt. Ltd

**PROPOSED MADAYN MAIN BUILDING AND FACILITIES AT
KNOWLEDGE OASIS MUSCAT
2020**

2020



The design was implemented in a 26100 sqm² land in Oman where the building consist of several lounges, shopping centers, restaurants, swimming pools etc. The Islamic architecture was applied throughout the design to portray the characteristics that have been grabbed from their culture which is unique to this region. The design was developed with Islamic architectural influence with a modern-Islamic interior touch.

LOCATION: Madayn

CLIENT: Sultanate of Oman

PROJECT COST:

KUMUDU S MUNASINGHE ARCHITECTS
IN ASSOCIATION WITH **PANARCH Pvt. Ltd**

PROPOSED MADAYN MAIN BUILDING AND FACILITIES AT
KNOWLEDGE OASIS MUSCAT
2020



PROPOSED MADAYN MAIN BUILDING AND FACILITIES AT
KNOWLEDGE OASIS MUSCAT
2020

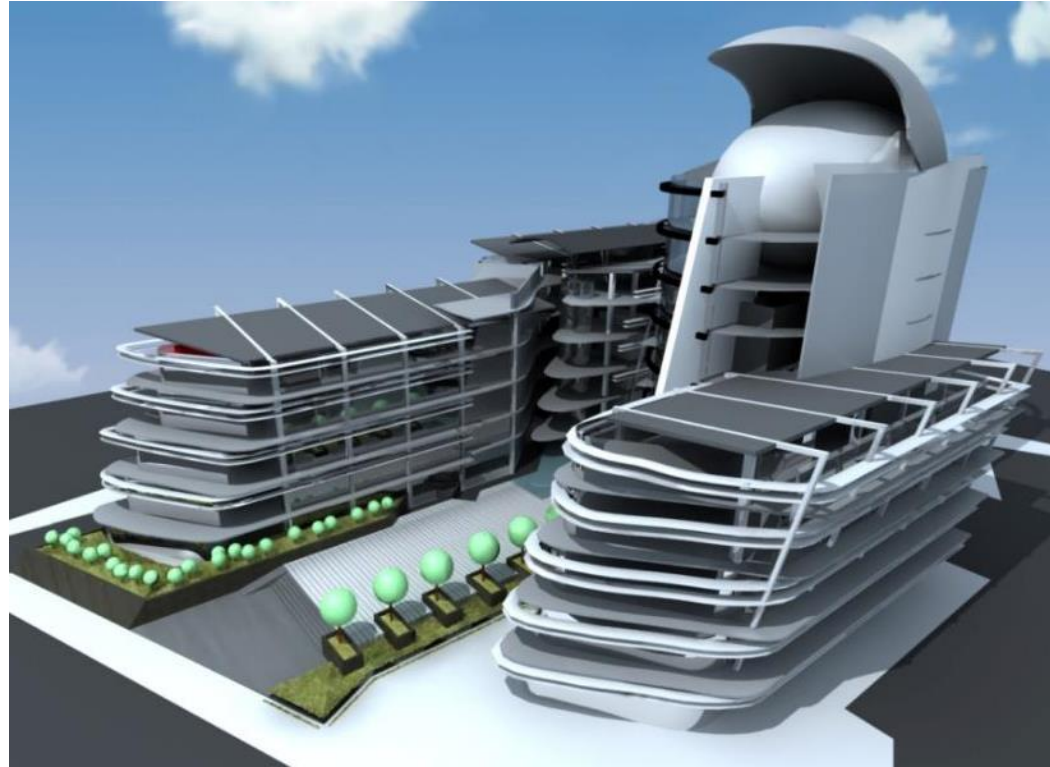


PROPOSED MADAYN MAIN BUILDING AND FACILITIES AT
KNOWLEDGE OASIS MUSCAT
2020



**OFFICE BUILDING ENERGY SECRETARIAT OF THE MINISTRY OF POWER & ENERGY AND
REGION 01 OF CEYLON ELECTRICITY BOARD**

2010



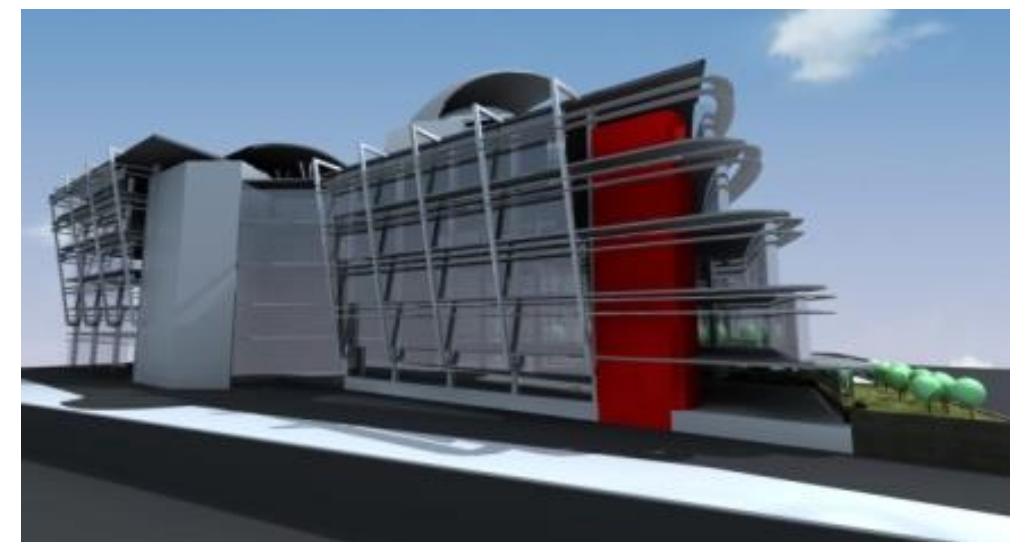
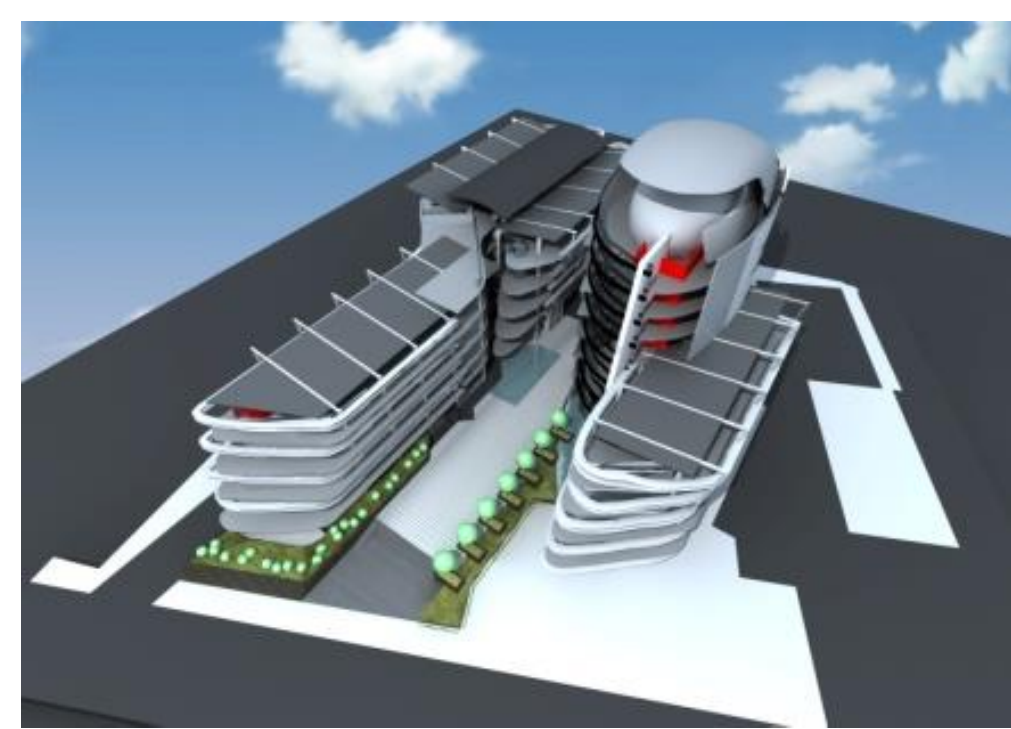
The project has been designed with zero energy concept and endows with world energy council for the system introduced to reduced the energy. The building itself produce energy through the wind tunnel created at the top of the building and the facade with micro solar panels.

LOCATION: Narahenpita, Colombo 05, Sri Lanka

CLIENT: Ceylon Electricity Board

PROJECT COST: RS. 1,500 million

KUMUDU S MUNASINGHE ARCHITECTS
IN ASSOCIATION WITH **PANARCH Pvt. Ltd**



APARTMENT COMPLEX AT PITAKOTTE , COLOMBO
2016



The apartment complex to accommodate 50 large apartments with private gardens and three level car parks

LOCATION: Pitakotte, Sri Lanka

PROJECT COST: RS. 1,500 million

KUMUDU S MUNASINGHE ARCHITECTS
IN ASSOCIATION WITH **PANARCH Pvt. Ltd**

PROPOSED APARTMENT COMPLEX AT THALAPATHPITIYA
2018



LOCATION: Thalapathpitiya , Sri Lanka.
CLIENT: Access Residencies 2 pvt.ltd
PROJECT COST: RS. 1,200 million

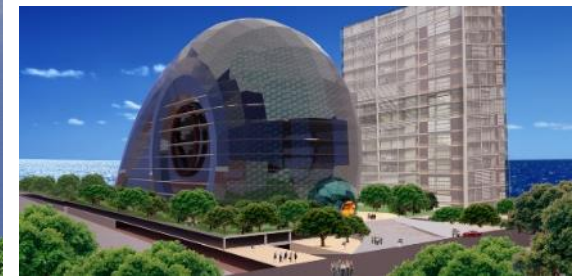
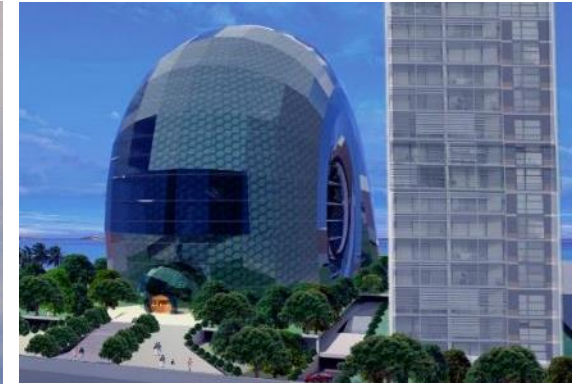
PROPOSED APARTMENT COMPLEX AT MT-LAVINIA, COLOMBO
2016



LOCATION: Mt-Lavinia, Sri Lanka
CLIENT: Lucky homes pvt ltd
PROJECT COST: RS. 1,500 million

KUMUDU S MUNASINGHE ARCHITECTS
IN ASSOCIATION WITH **PANARCH Pvt. Ltd**

SHOPPING, HOTEL & LUXURY APARTMENTS AND APARTMENT BLOCK FOR RE- SETTLEMENT
2013



Proposed Development at the Bambalapitiya Housing Complex (known as Bambalapitiya Flats) in Colombo 4. The project is likely to consist of new Apartments for re-settlement of existing occupiers and for sale to the general public, Shopping Malls, a Hotel and Recreational Facilities as well as peripheral activities such as Parking.

KUMUDU S MUNASINGHE ARCHITECTS
IN ASSOCIATION WITH **PANARCH Pvt. Ltd**

JING KANG HOTEL , SIGIRIYA
2016



60 bedrooms Hotel located facing the Sigiriya Rock one of the world heritage site. The hotel comprises several restaurants Lounges Spa and the large swimming pool facing the Sigiriya Rock.

LOCATION: Sigiriya , Sri Lanka

PROJECT COST: RS. 1,600 million

KUMUDU S MUNASINGHE ARCHITECTS
IN ASSOCIATION WITH **PANARCH Pvt. Ltd**

PROPOSED FACTORY AT PANADURA, SRI LANKA
2017



LOCATION:

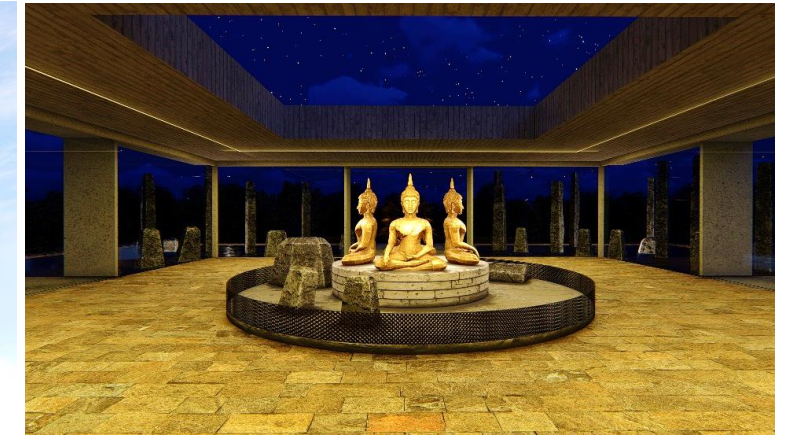
Panadura, Sri Lanka

CLIENT:

Korean SPA Packaging (Pvt)
Ltd., No.9, Modarawila Industrial Zone.

KUMUDU S MUNASINGHE ARCHITECTS
IN ASSOCIATION WITH **PANARCH Pvt. Ltd**

PROPOSED IMAGE HOUSE AT MAHAMEWNAWA, ANURADAPURA , SRI LANKA
2019



The Museum was design to exhibit old buddisht scripts and its evaluation over the period of time.

The concept was emerge from the stupa. The four courts of the stupa was represented have with the levels and steps, the last court is water pond and main building raised from the water. Since the building is raised. The lower levels would be used to have series of lecture halls ,study areas and library. The main building which immerges from the water will have the randomly places stone pillars to get the ambience of historic stupa outlook.

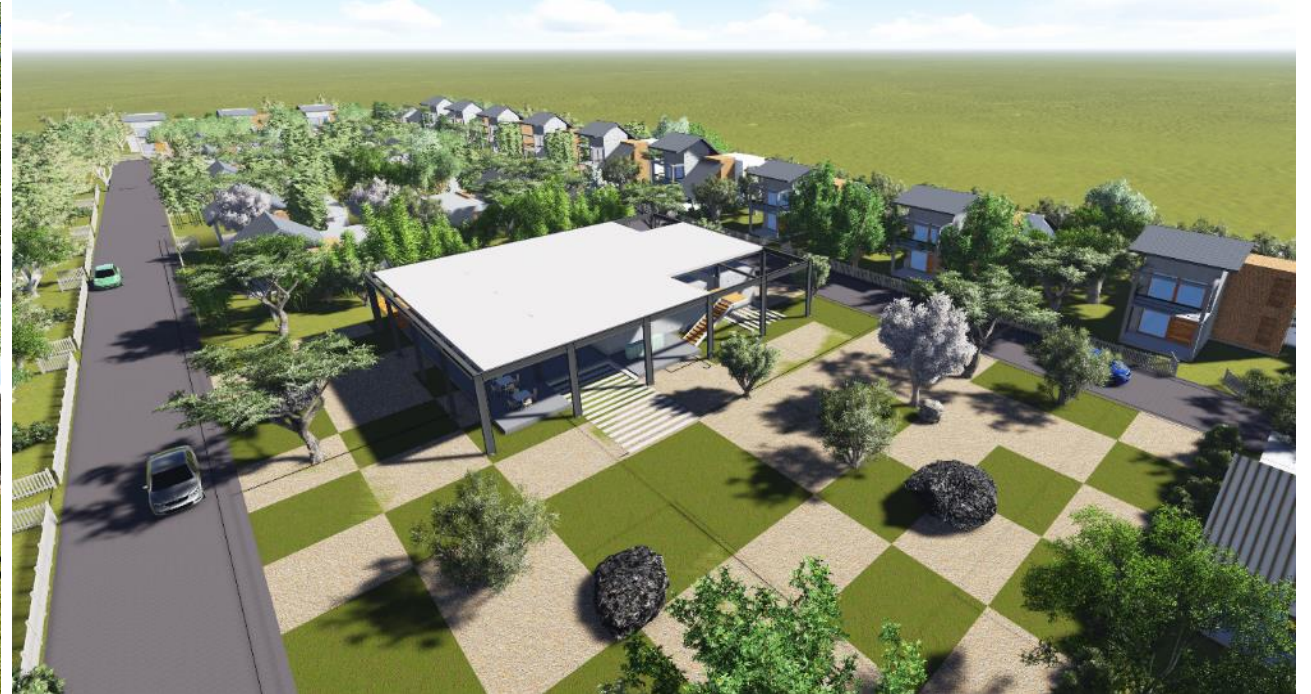
LOCATION: Anuradhapura, Sri Lanka

CLIENT : Hon. Rahula thero.

PROPOSED IMAGE HOUSE AT MAHAMEWNAWA, ANURADAPURA , SRI LANKA
2019



HOUSING COMPLEX AT MARAVILA, SRILANKA
2016



This is small villa type houses with club houses and swimming pool to accommodate middle class community.

LOCATION: Maravila, Sri Lanka

CLIENT: Lucky homes pvt ltd

KUMUDU S MUNASINGHE ARCHITECTS
IN ASSOCIATION WITH **PANARCH Pvt. Ltd**

APARTMENT COMPLEX AT NUGEGODA, SRILANKA
2016



LOCATION: Pitakotte, Sri Lanka

CLIENT: Lucky homes pvt ltd

KUMUDU S MUNASINGHE ARCHITECTS
IN ASSOCIATION WITH **PANARCH Pvt. Ltd**

HOUSING COMPLEX AT MARAVILA, SRILANKA
2016

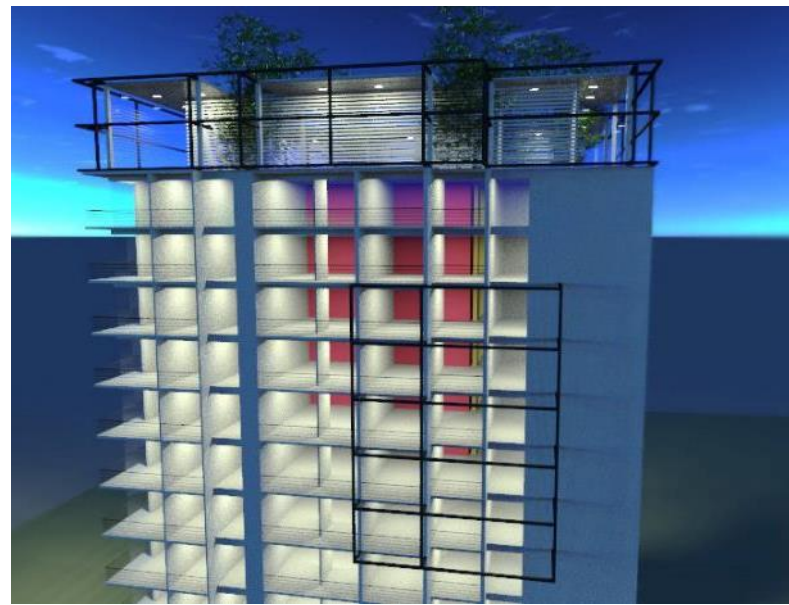


KUMUDU S MUNASINGHE ARCHITECTS
IN ASSOCIATION WITH **PANARCH** Pvt. Ltd

PROPOSED APARTMENT COMPLEX AT DEHIWALA
2016



LOCATION: Ramanaden Avenue, Dehiwela, Colombo 05.
CLIENT: C. M Developers
PROJECT COST: RS. 1,500 million



KUMUDU S MUNASINGHE ARCHITECTS
IN ASSOCIATION WITH **PANARCH Pvt. Ltd**



PROPOSED mix development project AT MACLEOD PLACE
2016



LOCATION: Macleod Place, Colombo 04, Sri Lanka

KUMUDU S MUNASINGHE ARCHITECTS
IN ASSOCIATION WITH **PANARCH Pvt. Ltd**

OFFICE BUILDING
Phoenix Ventures Ltd



LOCATION: Layards road, Colombo 04, Sri Lanka

PROJECT COST: RS. 1,500 million

KUMUDU S MUNASINGHE ARCHITECTS
IN ASSOCIATION WITH **PANARCH Pvt. Ltd**



PROPOSED TUTIONS COMPLEX AT NUGEGODA
2016



KUMUDU S MUNASINGHE ARCHITECTS
IN ASSOCIATION WITH **PANARCH** Pvt. Ltd

PAN ARCH (Pvt) Ltd can provide a Multi Disciplinary Service including Architecture, Project Management, Structural Engineering, Building Services Engineering, Quantity Surveying, Health and safety services.

TOWN AND COUNTRY PLANNING



KUMUDU S MUNASINGHE ARCHITECTS
IN ASSOCIATION WITH **PANARCH** Pvt. Ltd

PAN ARCH (Pvt) Ltd can provide a Multi Disciplinary Service including Architecture, Project Management, Structural Engineering, Building Services Engineering, Quantity Surveying, Health and safety services.

TOWN AND COUNTRY PLANNING



KUMUDU S MUNASINGHE ARCHITECTS
IN ASSOCIATION WITH **PANARCH Pvt. Ltd**

PAN ARCH (Pvt) Ltd can provide a Multi Disciplinary Service including Architecture, Project Management, Structural Engineering, Building Services Engineering, Quantity Surveying, Health and safety services.

ROAD CONSTRUCTION AND CIVIL ENGINEERING



KUMUDU S MUNASINGHE ARCHITECTS
IN ASSOCIATION WITH **PANARCH Pvt. Ltd**

PAN ARCH (Pvt) Ltd can provide a Multi Disciplinary Service including Architecture, Project Management, Structural Engineering, Building Services Engineering, Quantity Surveying, Health and safety services.

ROAD CONSTRUCTION AND CIVIL ENGINEERING



KUMUDU S MUNASINGHE ARCHITECTS
IN ASSOCIATION WITH **PANARCH Pvt. Ltd**



PAN ARCH (Pvt) Ltd can provide a Multi Disciplinary Service including Architecture, Project Management, Structural Engineering, Building Services Engineering, Quantity Surveying, Health and safety services.

ROAD CONSTRUCTION AND CIVIL ENGINEERING



KUMUDU S MUNASINGHE ARCHITECTS
IN ASSOCIATION WITH **PANARCH Pvt. Ltd**



PAN ARCH (Pvt) Ltd can provide a Multi Disciplinary Service including Architecture, Project Management, Structural Engineering, Building Services Engineering, Quantity Surveying, Health and safety services.

ROAD CONSTRUCTION AND CIVIL ENGINEERING



KUMUDU S MUNASINGHE ARCHITECTS
IN ASSOCIATION WITH **PANARCH Pvt. Ltd**

PAN ARCH (Pvt) Ltd can provide a Multi Disciplinary Service including Architecture, Project Management, Structural Engineering, Building Services Engineering, Quantity Surveying, Health and safety services.

ROAD CONSTRUCTION AND CIVIL ENGINEERING



KUMUDU S MUNASINGHE ARCHITECTS
IN ASSOCIATION WITH **PANARCH Pvt. Ltd**

THANK YOU